

**MATLAB® Coder™**

Getting Started Guide



**MATLAB®**

R2019b



# How to Contact MathWorks



Latest news: [www.mathworks.com](http://www.mathworks.com)  
Sales and services: [www.mathworks.com/sales\\_and\\_services](http://www.mathworks.com/sales_and_services)  
User community: [www.mathworks.com/matlabcentral](http://www.mathworks.com/matlabcentral)  
Technical support: [www.mathworks.com/support/contact\\_us](http://www.mathworks.com/support/contact_us)



Phone: 508-647-7000



The MathWorks, Inc.  
1 Apple Hill Drive  
Natick, MA 01760-2098

*MATLAB® Coder™ Getting Started Guide*

© COPYRIGHT 2011-2019 by The MathWorks, Inc.

The software described in this document is furnished under a license agreement. The software may be used or copied only under the terms of the license agreement. No part of this manual may be photocopied or reproduced in any form without prior written consent from The MathWorks, Inc.

FEDERAL ACQUISITION: This provision applies to all acquisitions of the Program and Documentation by, for, or through the federal government of the United States. By accepting delivery of the Program or Documentation, the government hereby agrees that this software or documentation qualifies as commercial computer software or commercial computer software documentation as such terms are used or defined in FAR 12.212, DFARS Part 227.72, and DFARS 252.227-7014. Accordingly, the terms and conditions of this Agreement and only those rights specified in this Agreement, shall pertain to and govern the use, modification, reproduction, release, performance, display, and disclosure of the Program and Documentation by the federal government (or other entity acquiring for or through the federal government) and shall supersede any conflicting contractual terms or conditions. If this License fails to meet the government's needs or is inconsistent in any respect with federal procurement law, the government agrees to return the Program and Documentation, unused, to The MathWorks, Inc.

## Trademarks

MATLAB and Simulink are registered trademarks of The MathWorks, Inc. See [www.mathworks.com/trademarks](http://www.mathworks.com/trademarks) for a list of additional trademarks. Other product or brand names may be trademarks or registered trademarks of their respective holders.

## Patents

MathWorks products are protected by one or more U.S. patents. Please see [www.mathworks.com/patents](http://www.mathworks.com/patents) for more information.

## Revision History

April 2011	Online only	New for R2011a
September 2011	Online only	Revised for Version 2.1 (Release 2011b)
March 2012	Online only	Revised for Version 2.2 (Release 2012a)
September 2012	Online only	Revised for Version 2.3 (Release 2012b)
March 2013	Online only	Revised for Version 2.4 (Release 2013a)
September 2013	Online only	Revised for Version 2.5 (Release 2013b)
March 2014	Online only	Revised for Version 2.6 (Release 2014a)
October 2014	Online only	Revised for Version 2.7 (Release 2014b)
March 2015	Online only	Revised for Version 2.8 (Release 2015a)
September 2015	Online only	Revised for Version 3.0 (Release 2015b)
October 2015	Online only	Rereleased for Version 2.8.1 (Release 2015aSP1)
March 2016	Online only	Revised for Version 3.1 (Release 2016a)
September 2016	Online only	Revised for Version 3.2 (Release 2016b)
March 2017	Online only	Revised for Version 3.3 (Release 2017a)
September 2017	Online only	Revised for Version 3.4 (Release 2017b)
March 2018	Online only	Revised for Version 4.0 (Release 2018a)
September 2018	Online only	Revised for Version 4.1 (Release 2018b)
March 2019	Online only	Revised for Version 4.2 (Release 2019a)
September 2019	Online only	Revised for Version 4.3 (Release 2019b)



## Check Bug Reports for Issues and Fixes

Software is inherently complex and is not free of errors. The output of a code generator might contain bugs, some of which are not detected by a compiler. MathWorks reports critical known bugs brought to its attention on its Bug Report system at [www.mathworks.com/support/bugreports/](http://www.mathworks.com/support/bugreports/). In the search bar, type the phrase "Incorrect Code Generation" to obtain a report of known bugs that produce code that might compile and execute, but still produce wrong answers. To save a search, click Save Search.

The bug reports are an integral part of the documentation for each release. Examine periodically all bug reports for a release, as such reports may identify inconsistencies between the actual behavior of a release you are using and the behavior described in this documentation.

In addition to reviewing bug reports, you should implement a verification and validation strategy to identify potential bugs in your design, code, and tools.



## 1

### Product Overview

<b>MATLAB Coder Product Description</b> .....	<b>1-2</b>
<b>About MATLAB Coder</b> .....	<b>1-3</b>
When to Use MATLAB Coder .....	<b>1-3</b>
What You Can Do with the Project Interface .....	<b>1-3</b>
When to Use the Command Line (codegen function) .....	<b>1-3</b>
<b>Code Generation for Embedded Software Applications</b> .....	<b>1-5</b>
<b>Code Generation for Fixed-Point Algorithms</b> .....	<b>1-6</b>
<b>Installing Prerequisite Products</b> .....	<b>1-7</b>
<b>Related Products</b> .....	<b>1-8</b>
<b>Setting Up the C or C++ Compiler</b> .....	<b>1-9</b>
<b>Expected Background</b> .....	<b>1-10</b>
<b>Code Generation Workflow</b> .....	<b>1-11</b>
See Also .....	<b>1-11</b>
<b>Input Type Specification for Code Generation</b> .....	<b>1-12</b>

## 2

<b>Generate C Code by Using the MATLAB Coder App</b> .....	2-2
Tutorial Files .....	2-2
Generate C Code for the MATLAB Function .....	2-4
Generate C Code for Variable-Size Inputs .....	2-16
Next Steps .....	2-19
<b>Generate C Code at the Command Line</b> .....	2-20
Tutorial Files .....	2-20
Generate C Code for the MATLAB Function .....	2-22
Generate C Code for Variable-Size Inputs .....	2-29
Next Steps .....	2-30
<b>Accelerate MATLAB Algorithm by Generating MEX Function</b> .....	2-31
Tutorial Files .....	2-31
Generate MEX Function for the MATLAB Function .....	2-34
Generate MEX Function for Variable-Size Inputs .....	2-38
Next Steps .....	2-40
<b>Hello World</b> .....	2-41
<b>Averaging Filter</b> .....	2-43

## Best Practices for Working with MATLAB Coder

## 3

<b>Recommended Compilation Options for codegen</b> .....	3-2
-c Generate Code Only .....	3-2
-report Generate Code Generation Report .....	3-2
<b>Testing MEX Functions in MATLAB</b> .....	3-3
<b>Comparing C Code and MATLAB Code Using Tiling in the     MATLAB Editor</b> .....	3-4
<b>Using Build Scripts</b> .....	3-5



<b>Check Code Using the MATLAB Code Analyzer</b> .....	<b>3-7</b>
<b>Separating Your Test Bench from Your Function Code</b> .....	<b>3-8</b>
<b>Preserving Your Code</b> .....	<b>3-9</b>
<b>File Naming Conventions</b> .....	<b>3-10</b>



# Product Overview

---

- “MATLAB Coder Product Description” on page 1-2
- “About MATLAB Coder” on page 1-3
- “Code Generation for Embedded Software Applications” on page 1-5
- “Code Generation for Fixed-Point Algorithms” on page 1-6
- “Installing Prerequisite Products” on page 1-7
- “Related Products” on page 1-8
- “Setting Up the C or C++ Compiler” on page 1-9
- “Expected Background” on page 1-10
- “Code Generation Workflow” on page 1-11
- “Input Type Specification for Code Generation” on page 1-12

## **MATLAB Coder Product Description**

### **Generate C and C++ code from MATLAB code**

MATLAB Coder generates C and C++ code from MATLAB code for a variety of hardware platforms, from desktop systems to embedded hardware. It supports most of the MATLAB language and a wide range of toolboxes. You can integrate the generated code into your projects as source code, static libraries, or dynamic libraries. The generated code is readable and portable. You can incorporate your existing C code and libraries to get the ultimate efficiency for the key parts of your algorithm, or to reuse code you trust. You can also package the generated code as a MEX-function for use in the MATLAB environment for verification or acceleration.

Embedded Coder® enhances MATLAB Coder for production use with support for code customization, target-specific optimizations, code traceability, and software-in-the-loop (SIL) and processor-in-the-loop (PIL) verification.

To deploy complete applications, including the user interfaces, use MATLAB Compiler SDK™. To deploy MATLAB programs as standalone applications, use MATLAB Compiler™ and to generate software components for integration with other programming languages, use MATLAB Compiler SDK.

# About MATLAB Coder

## When to Use MATLAB Coder

Use MATLAB Coder to:

- Generate readable, efficient, standalone C/C++ code from MATLAB code.
- Generate MEX functions from MATLAB code to:
  - Accelerate your MATLAB algorithms.
  - Verify generated C code within MATLAB.
- Integrate custom C/C++ code into MATLAB.

## What You Can Do with the Project Interface

- Specify the MATLAB files from which you want to generate code
- Specify the data types for the inputs to these MATLAB files
- Select an output type:
  - MEX function
  - C/C++ Static Library
  - C/C++ Dynamic Library
  - C/C++ Executable
- Configure build settings to customize your environment for code generation
- Open the code generation report to view build status, generated code, and compile-time information for the variables and expressions in your MATLAB code

### See Also

- “Set Up a MATLAB Coder Project”
- “Generate C Code by Using the MATLAB Coder App” on page 2-2

## When to Use the Command Line (codegen function)

Use the command line if you use build scripts to specify input parameter types and code generation options.

## **See Also**

- The `codegen` function reference page
- “Generate C Code at the Command Line” on page 2-20
- “Accelerate MATLAB Algorithm by Generating MEX Function” on page 2-31

## Code Generation for Embedded Software Applications

The Embedded Coder product extends the MATLAB Coder product with features that you can use for embedded software development. With the Embedded Coder product, you can generate code that has the clarity and efficiency of professional handwritten code. For example, you can:

- Generate code that is compact and executes efficiently for embedded systems.
- Customize the appearance of the generated code.
- Optimize generated code for a specific target environment.
- Integrate existing applications, functions, and data.
- Enable tracing, reporting, and testing options that facilitate code verification activities.

## **Code Generation for Fixed-Point Algorithms**

Using the Fixed-Point Designer product, you can generate:

- MEX functions to accelerate fixed-point algorithms.
- Fixed-point code that provides a bit-wise match to MEX function results.



## Installing Prerequisite Products

To generate C and C++ code using MATLAB Coder, you must install the following products:

- MATLAB

---

**Note** If MATLAB is installed on a path that contains non 7-bit ASCII characters, such as Japanese characters, MATLAB Coder might not work because it cannot locate code generation library functions.

---

- MATLAB Coder
- C or C++ compiler

MATLAB Coder automatically locates and uses a supported installed compiler. For the current list of supported compilers, see Supported and Compatible Compilers on the MathWorks® website.

You can use `mex -setup` to change the default compiler. See “Change Default Compiler” (MATLAB).

For instructions on installing MathWorks products, see the MATLAB installation documentation for your platform. If you have installed MATLAB and want to check which other MathWorks products are installed, enter `ver` in the MATLAB Command Window.

## **Related Products**

- Embedded Coder
- Simulink® Coder

## Setting Up the C or C++ Compiler

MATLAB Coder automatically locates and uses a supported installed compiler. For the current list of supported compilers, see Supported and Compatible Compilers on the MathWorks website.

You can use `mex -setup` to change the default compiler. See “Change Default Compiler” (MATLAB). If you generate C++ code, see “Choose a C++ Compiler” (MATLAB).

## Expected Background

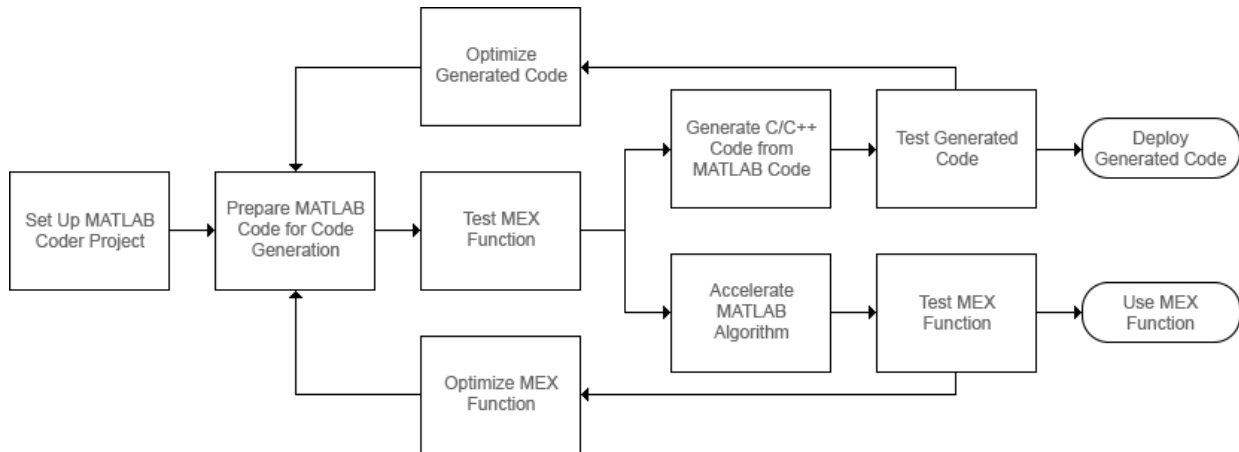
You should be familiar with :

- MATLAB software
- MEX functions
- C/C++ programming concepts

To generate C code on embedded targets, you should also be familiar with how to re-compile the generated code in the target environment.

To integrate the generated code into external applications, you should be familiar with the C/C++ compilation and linking process.

## Code Generation Workflow



### See Also

- “Set Up a MATLAB Coder Project”
- “Workflow for Preparing MATLAB Code for Code Generation”
- “Workflow for Testing MEX Functions in MATLAB”
- “Code Generation Workflow”
- “Workflow for Accelerating MATLAB Algorithms”
- “Optimization Strategies”
- “Accelerate MATLAB Algorithms”

## Input Type Specification for Code Generation

C/C++ and MATLAB handle variables differently. Some of these differences that affect the code generation workflow are:

- C/C++ source code includes type declarations for all variables. The C/C++ compiler uses these declarations to determine the types of all variables at compile time. MATLAB code does not include explicit type declarations. The MATLAB execution engine determines the types of variables at run time.
- In C/C++, the memory for arrays can be either statically declared at compile time (fixed size arrays), or dynamically allocated at run time (variable-size arrays). All MATLAB arrays use dynamically allocated memory and are of variable size.

To allow the generation of C/C++ code with specific types, you must specify the properties (class, size, and complexity) of all input variables to the MATLAB entry-point functions during C/C++ or MEX code generation. An entry-point function is a top-level MATLAB function from which you generate code. The code generator uses these input properties to determine the properties of all variables in the generated code. Different input type specifications can cause the same MATLAB code to produce different versions of the generated code.

If you generate code by using the `codegen` command, you use the `-args` option to specify the input types. If you generate code by using the MATLAB Coder app, you specify the input types in the **Define Input Types** page.

To see how input type specification affects the generated code, consider a simple MATLAB function `myMultiply` that multiplies two quantities `a` and `b` and returns the value of the product.

```
function y = myMultiply(a,b)
y = a*b;
end
```

Generate static C library code for three different type specifications for the input arguments `a` and `b`. In each case, inspect the generated code.

- Specify `a` and `b` as real double scalars. To generate code for these inputs, run these commands:

```
a = 1;
codegen -config:lib myMultiply -args {a,a}
```

The generated C source file `myMultiply.c` contains the C function:

```
double myMultiply(double a, double b)
{
    return a * b;
}
```

- Specify `a` and `b` as real double 5-by-5 matrices. To generate code for these inputs, run these commands:

```
a = zeros(5,5);
codegen -config:lib myMultiply -args {a,a}
```

The generated C source file `myMultiply.c` contains the C function:

```
void myMultiply(const double a[25], const double b[25], double y[25])
{
    int i;
    int i1;
    double d;
    int i2;
    for (i = 0; i < 5; i++) {
        for (i1 = 0; i1 < 5; i1++) {
            d = 0.0;
            for (i2 = 0; i2 < 5; i2++) {
                d += a[i + 5 * i2] * b[i2 + 5 * i1];
            }

            y[i + 5 * i1] = d;
        }
    }
}
```

`const double a[25]` and `const double b[25]` correspond to the inputs `a` and `b` in the MATLAB code. The size of the one-dimensional arrays `a` and `b` in the C code is 25, which is equal to the total number of elements in example input arrays that you used when you called the `codegen` function.

The C function has one more argument: the one-dimensional array `y` of size 25. It uses this array to return the output of the function.

You can also generate code that has the same array dimensions as the MATLAB code. See “Generate Code That Uses N-Dimensional Indexing”.

- Finally, you generate code for `myMultiply` that can accept input arrays of many different sizes. To specify variable-size inputs, you can use the `coder.typeof`

function. `coder.typeof(A,B,1)` specifies a variable-size input with the same class and complexity as A and upper bounds given by the corresponding element of the size vector B.

Specify `a` and `b` as real double arrays that are of variable-size, with a maximum size of 10 on either dimension. To generate code, run these commands:

```
a = coder.typeof(1,[10 10],1);  
codegen -config:lib myMultiply -args {a,a}
```

The signature of the generated C function is:

```
void myMultiply(const double a_data[], const int a_size[2], const double b_data[],  
               const int b_size[2], double y_data[], int y_size[2])
```

The arguments `a_data`, `b_data`, and `y_data` correspond to the input arguments `x` and `b` and the output argument `y` in the original MATLAB function. The C function now accepts three additional arguments, `a_size`, `b_size`, and `y_size`, that specify the sizes of `a_data`, `b_data`, and `y_data` at run time.

## See Also

`codegen` | `coder.typeof`

## More About

- “Specify Properties of Entry-Point Function Inputs”
- “Generate C Code by Using the MATLAB Coder App” on page 2-2
- “Generate C Code at the Command Line” on page 2-20
- “Generate Code That Uses N-Dimensional Indexing”



# Tutorials

---

- “Generate C Code by Using the MATLAB Coder App” on page 2-2
- “Generate C Code at the Command Line” on page 2-20
- “Accelerate MATLAB Algorithm by Generating MEX Function” on page 2-31
- “Hello World” on page 2-41
- “Averaging Filter” on page 2-43

## Generate C Code by Using the MATLAB Coder App

In this tutorial, you use the MATLAB Coder app to generate a static C library for a MATLAB function. You first generate C code that can accept only inputs that have fixed preassigned size. You then generate C code that can accept inputs of many different sizes.

You can also generate code at the MATLAB command line by using the `codegen` command. For a tutorial on this workflow, see “Generate C Code at the Command Line” on page 2-20.

The MATLAB Coder app is not supported in MATLAB Online™. To generate C/C++ code in MATLAB Online, use the `codegen` command.

### Tutorial Files

Copy the tutorial files from the folder `matlabroot\help\toolbox\coder\examples\euclidean` to a local working folder. Here, `matlabroot` is the MATLAB installation folder, for example, `C:\Program Files\MATLAB\R2019a`. To copy these files to your current folder, run this MATLAB command:

```
copyfile(fullfile(matlabroot, 'help', 'toolbox', 'coder', 'examples', 'euclidean'))
```

This tutorial uses the `euclidean_data.mat`, `euclidean.m`, and `test.m` files.

- The MATLAB data file `euclidean_data.mat` contains two pieces of data: a single point in three-dimensional Euclidean space and a set of several other points in three-dimensional Euclidean space. More specifically:
  - `x` is a 3-by-1 column vector that represents a point in three-dimensional Euclidean space.
  - `cb` is a 3-by-216 array. Each column in `cb` represents a point in three-dimensional Euclidean space.
- The MATLAB file `euclidean.m` contains the function `euclidean` that implements the *core algorithm* in this example. The function takes `x` and `cb` as inputs. It calculates the Euclidean distance between `x` and each point in `cb` and returns these quantities:
  - The column vector `y_min`, which is equal to the column in `cb` that represents the point that is closest to `x`.
  - The column vector `y_max`, which is equal to the column in `cb` that represents the point that is farthest from `x`.

- The 2-dimensional vector `idx` that contains the column indices of the vectors `y_min` and `y_max` in `cb`.
- The 2-dimensional vector `distance` that contains the calculated smallest and largest distances to `x`.

```
function [y_min,y_max,idx,distance] = euclidean(x,cb)
% Initialize minimum distance as distance to first element of cb
% Initialize maximum distance as distance to first element of cb
idx(1)=1;
idx(2)=1;

distance(1)=norm(x-cb(:,1));
distance(2)=norm(x-cb(:,1));

% Find the vector in cb with minimum distance to x
% Find the vector in cb with maximum distance to x
for index=2:size(cb,2)
    d=norm(x-cb(:,index));
    if d < distance(1)
        distance(1)=d;
        idx(1)=index;
    end
    if d > distance(2)
        distance(2)=d;
        idx(2)=index;
    end
end

% Output the minimum and maximum distance vectors
y_min=cb(:,idx(1));
y_max=cb(:,idx(2));

end
```

- The MATLAB script `test.m` loads the data file `euclidean_data.mat` into the workspace. It then calls the function `euclidean` to calculate `y_min`, `y_max`, `idx`, and `distance`. The script then displays the calculated quantities at the command line.

Loading `euclidean_data.mat` is the preprocessing step that is executed before calling the core algorithm. Displaying the results is the post-processing step.

```
% Load test data
load euclidean_data.mat
```

```
% Determine closest and farthest points and corresponding distances
[y_min,y_max,idx,distance] = euclidean(x,cb);

% Display output for the closest point
disp('Coordinates of the closest point are: ');
disp(num2str(y_min'));
disp(['Index of the closest point is ', num2str(idx(1))]);
disp(['Distance to the closest point is ', num2str(distance(1))]);

disp(newline);

% Display output for the farthest point
disp('Coordinates of the farthest point are: ');
disp(num2str(y_max'));
disp(['Index of the farthest point is ', num2str(idx(2))]);
disp(['Distance to the farthest point is ', num2str(distance(2))]);
```

---

**Tip** You can generate code from MATLAB functions by using MATLAB Coder. Code generation from MATLAB scripts is not supported.

Use test scripts to separate the pre- and post-processing steps from the function implementing the core algorithm. This practice enables you to easily reuse your algorithm. You generate code for the MATLAB function that implements the core algorithm. You do not generate code for the test script.

---

## Generate C Code for the MATLAB Function

### Run the Original MATLAB Code

Run the test script `test.m` in MATLAB. The output displays `y`, `idx`, and `distance`.

```
Coordinates of the closest point are:
0.8      0.8      0.4
Index of the closest point is 171
Distance to the closest point is 0.080374
```

```
Coordinates of the farthest point are:
0  0  1
Index of the farthest point is 6
Distance to the farthest point is 1.2923
```

## Make the MATLAB Code Suitable for Code Generation

The Code Analyzer in the MATLAB Editor continuously checks your code as you enter it. It reports issues and recommends modifications to maximize performance and maintainability.

- 1 Open `euclidean.m` in the MATLAB Editor. The Code Analyzer message indicator in the top right corner of the MATLAB Editor is green. The analyzer did not detect errors, warnings, or opportunities for improvement in the code.
- 2 After the function declaration, add the  `%#codegen` directive:

```
function [y,idx,distance] = euclidean(x,cb) %#codegen
```

The  `%#codegen` directive prompts the Code Analyzer to identify warnings and errors specific to code generation.

The Code Analyzer message indicator becomes red, indicating that it has detected code generation issues.

```

1 function [y_min,y_max,idx,distance] = euclidean(x,cb) %#codegen
2 % Initialize minimum distance as distance to first element of cb
3 % Initialize maximum distance as distance to first element of cb
4 idx(1)=1;
5 idx(2)=1;
6
7 distance (1)=norm(x-cb(:,1));
8 distance (2)=norm(x-cb(:,1));
9
10 % Find the vector in cb with minimum distance to x
11 % Find the vector in cb with maximum distance to x

```

- 3 To view the warning messages, move your cursor to the underlined code fragments. The warnings indicate that code generation requires the variables `idx` and `distance` to be fully defined before subscripting them. These warnings appear because the code generator must determine the sizes of these variables at their first appearance in the code. To fix this issue, use the `ones` function to simultaneously allocate and initialize these arrays.

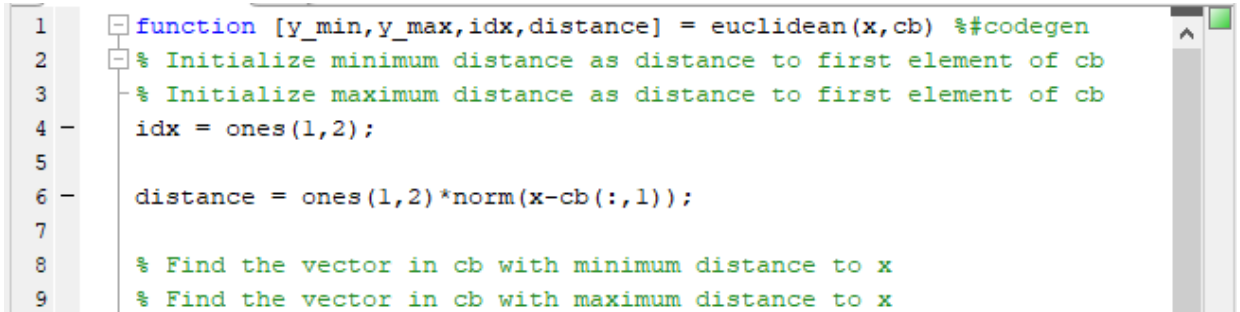
```

% Initialize minimum distance as distance to first element of cb
% Initialize maximum distance as distance to first element of cb
idx = ones(1,2);

```

```
distance = ones(1,2)*norm(x-cb(:,1));
```

The Code Analyzer message indicator becomes green again, indicating that it does not detect any more code generation issues.



```
1 function [y_min,y_max,idx,distance] = euclidean(x,cb) %#codegen
2 % Initialize minimum distance as distance to first element of cb
3 % Initialize maximum distance as distance to first element of cb
4 idx = ones(1,2);
5
6 distance = ones(1,2)*norm(x-cb(:,1));
7
8 % Find the vector in cb with minimum distance to x
9 % Find the vector in cb with maximum distance to x
```

For more information about using the Code Analyzer, see “Check Code for Errors and Warnings” (MATLAB).

- 4 Save the file.

You are now ready to compile your code by using the MATLAB Coder app. Here, compilation refers to the generation of C/C++ code from your MATLAB code.

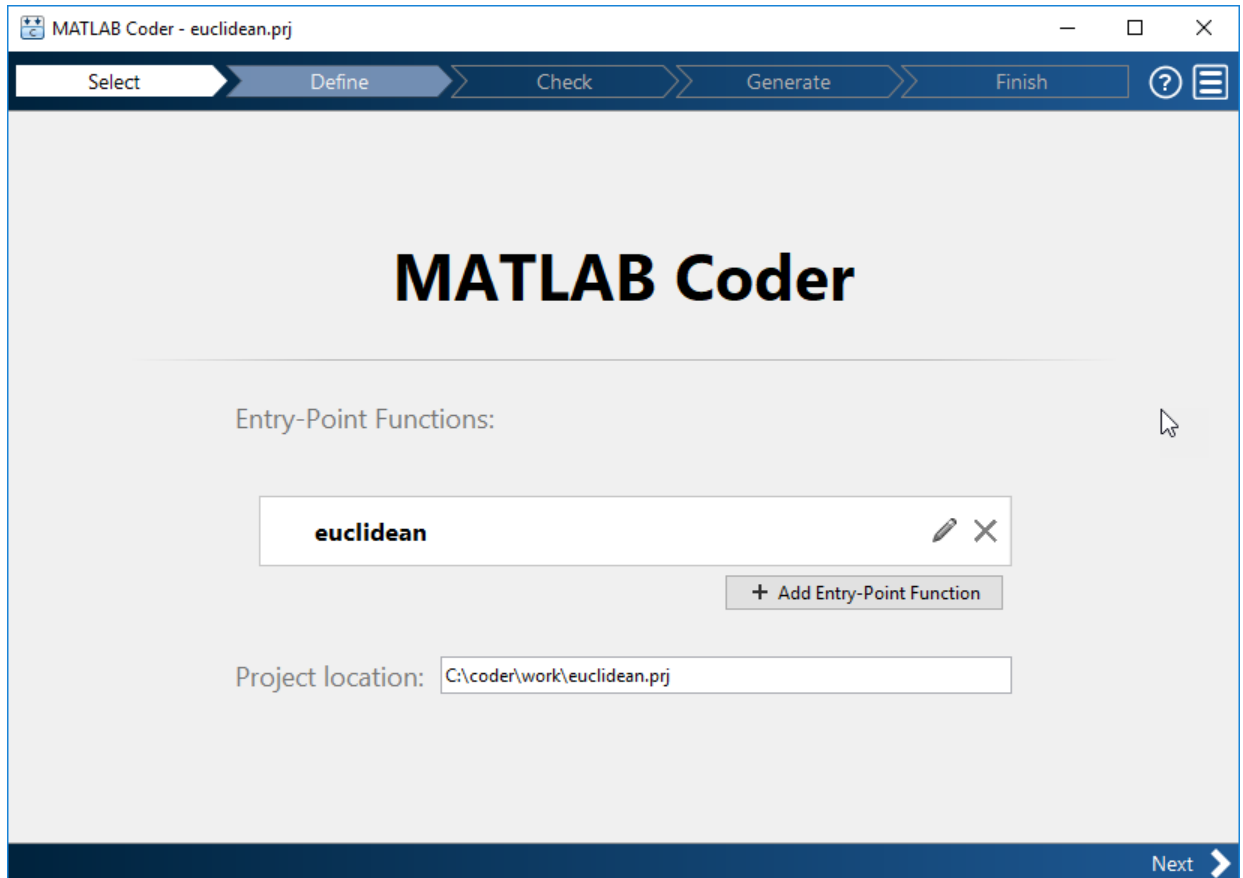
---

**Note** Compilation of MATLAB code refers to the generation of C/C++ code from the MATLAB code. In other contexts, the term compilation could refer to the action of a C/C++ compiler.

---

### Open the MATLAB Coder App and Select Source Files

- 1 On the MATLAB toolstrip **Apps** tab, under **Code Generation**, click the MATLAB Coder app icon. The app opens the **Select Source Files** page.
- 2 In the **Select Source Files** page, enter or select the name of the entry-point function `euclidean`. An entry-point function is a top-level MATLAB function from which you generate code. The app creates a project with the default name `euclidean.prj` in the current folder.



- 3 Click **Next** to go to the **Define Input Types** step. The app runs the Code Analyzer (that you already ran in the previous step) and the Code Generation Readiness Tool on the entry-point function. The Code Generation Readiness Tool screens the MATLAB code for features and functions that are not supported for code generation. If the app identifies issues, it opens the **Review Code Generation Readiness** page where you can review and fix issues. In this example, because the app does not detect issues, it opens the **Define Input Types** page. For more information, see “Code Generation Readiness Tool”.

**Note** The Code Analyzer and the Code Generation Readiness Tool might not detect all code generation issues. After eliminating the errors or warnings that these two

tools detect, generate code with MATLAB Coder to determine if your MATLAB code has other compliance issues.

---

Certain MATLAB built-in functions and toolbox functions, classes, and System objects that are supported for C/C++ code generation have specific code generation limitations. These limitations and related usage notes are listed in the **Extended Capabilities** sections of their corresponding reference pages. For more information, see “Functions and Objects Supported for C/C++ Code Generation”.

### Define Input Types

Because C uses static typing, the code generator must determine the class, size, and complexity of all variables in the MATLAB files at code generation time, also known as *compile time*. Therefore, you must specify the properties of all entry-point function inputs. To specify input properties, you can:

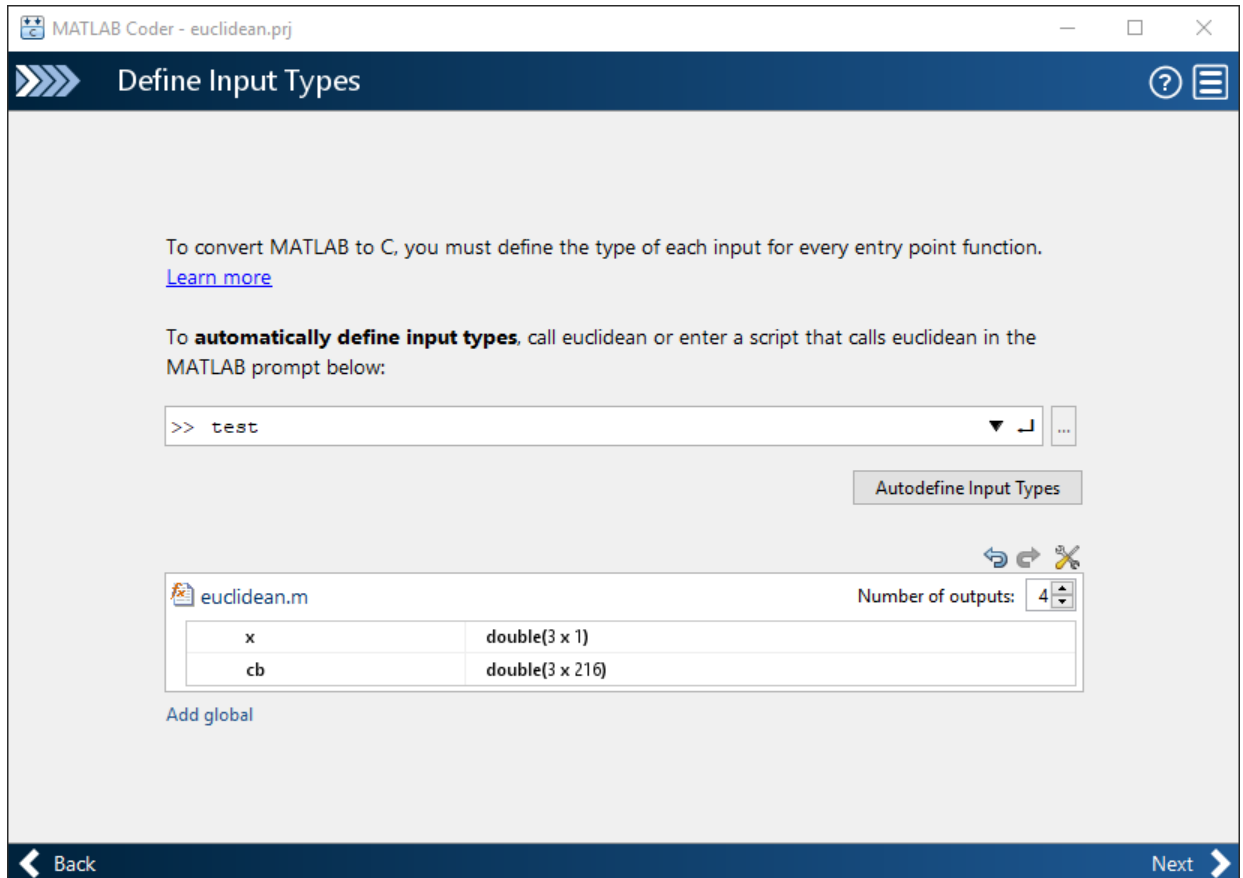
- Instruct the app to automatically determine input properties by providing a script that calls the entry-point functions with sample inputs.
- Specify properties directly.

In this example, to define the properties of the inputs `x` and `cb`, specify the test file `test.m` that the code generator can use to define types automatically:

- 1 Enter or select the test file `test.m`.
- 2 Click **Autodefine Input Types**.

The test file, `test.m`, calls the entry-point function, `euclidean`, with the expected input types. The app determines that the input `x` is `double(3x1)` and the input `cb` is `double(3x216)`.






- 3 Click **Next** to go to the **Check for Run-Time Issues** step.

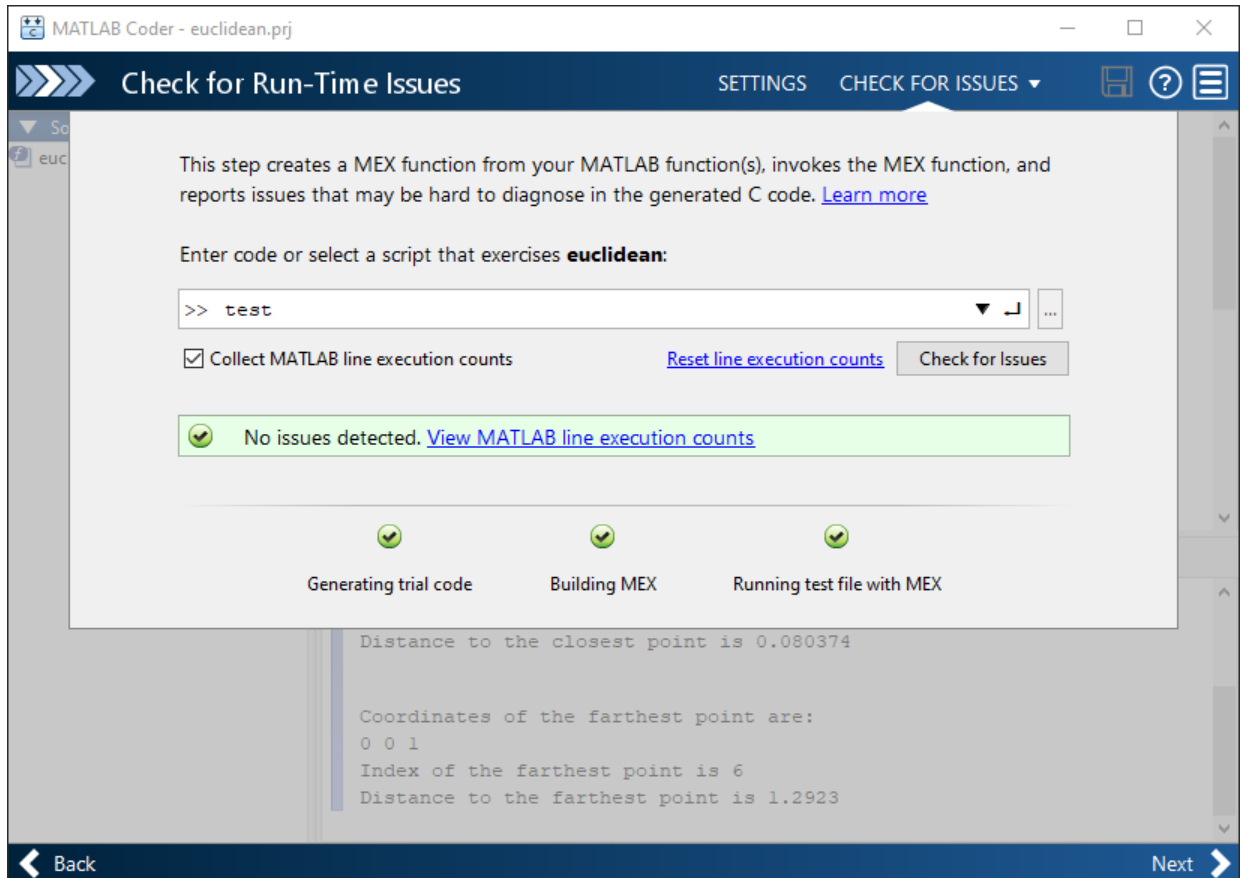
### Check for Run-Time Issues

The **Check for Run-Time Issues** step generates a MEX file from your entry-point functions, runs the MEX function, and reports issues. A MEX function is generated code that can be called from inside MATLAB. It is a best practice to perform this step because you can detect and fix run-time errors that are harder to diagnose in the generated C code. By default, the MEX function includes memory integrity checks. These checks perform array bounds and dimension checking. The checks detect violations of memory integrity in code generated for MATLAB functions. For more information, see “Control Run-Time Checks”.

To convert MATLAB code to efficient C/C++ source code, the code generator introduces optimizations that, in certain situations, cause the generated code to behave differently than the original source code. See “Differences Between Generated Code and MATLAB Code”.

- 1 To open the **Check for Run-Time Issues** dialog box, click the **Check for Issues** arrow .
- 2 In the **Check for Run-Time Issues** dialog box, specify a test file or enter code that calls the entry-point function with example inputs. For this example, use the test file `test` that you used to define the input types.
- 3 Click **Check for Issues**.

The app generates a MEX function. It runs the test script `test` replacing calls to `euclidean` with calls to the generated MEX. If the app detects issues during the MEX function generation or execution, it provides warning and error messages. Click these messages to navigate to the problematic code and fix the issue. In this example, the app does not detect issues.



- 4 By default, the app collects line execution counts. These counts help you to see how well the test file `test.m` exercised the `euclidean` function. To view line execution counts, click **View MATLAB line execution counts**. The app editor displays a color-coded bar to the left of the code. To extend the color highlighting over the code and to see line execution counts, place your cursor over the bar.

MATLAB Coder - euclidean.prj

Check for Run-Time Issues    SETTINGS    CHECK FOR ISSUES

Source Code

euclidean

```

15 % Find the vector in cb with minimum distance to x
16 % Find the vector in cb with maximum distance to x
17 for index=2:size(cb,2)           215 calls
18     d=norm(x-cb(:,index));
19     if d < distance(1)           30 calls
20         distance(1)=d;
21         idx(1)=index;
22     end                           215 calls
23     if d > distance(2)           2 calls
24         distance(2)=d;
25         idx(2)=index;
26     end                           215 calls
27 end                               1 calls
28
29 % Output the minimum and maximum distance vectors

```

Target Build Log    Potential Differences    Test Output

```

0.8      0.8      0.4
Index of the closest point is 171
Distance to the closest point is 0.080374

Coordinates of the farthest point are:
0 0 1
Index of the farthest point is 6
Distance to the farthest point is 1.2923


```

Back    Next

A particular shade of green indicates that the line execution count for this code falls in a certain range. In this case, the `for`-loop executes 215 times. For information about how to interpret line execution counts and turn off collection of the counts, see “Collect and View Line Execution Counts for Your MATLAB Code”.

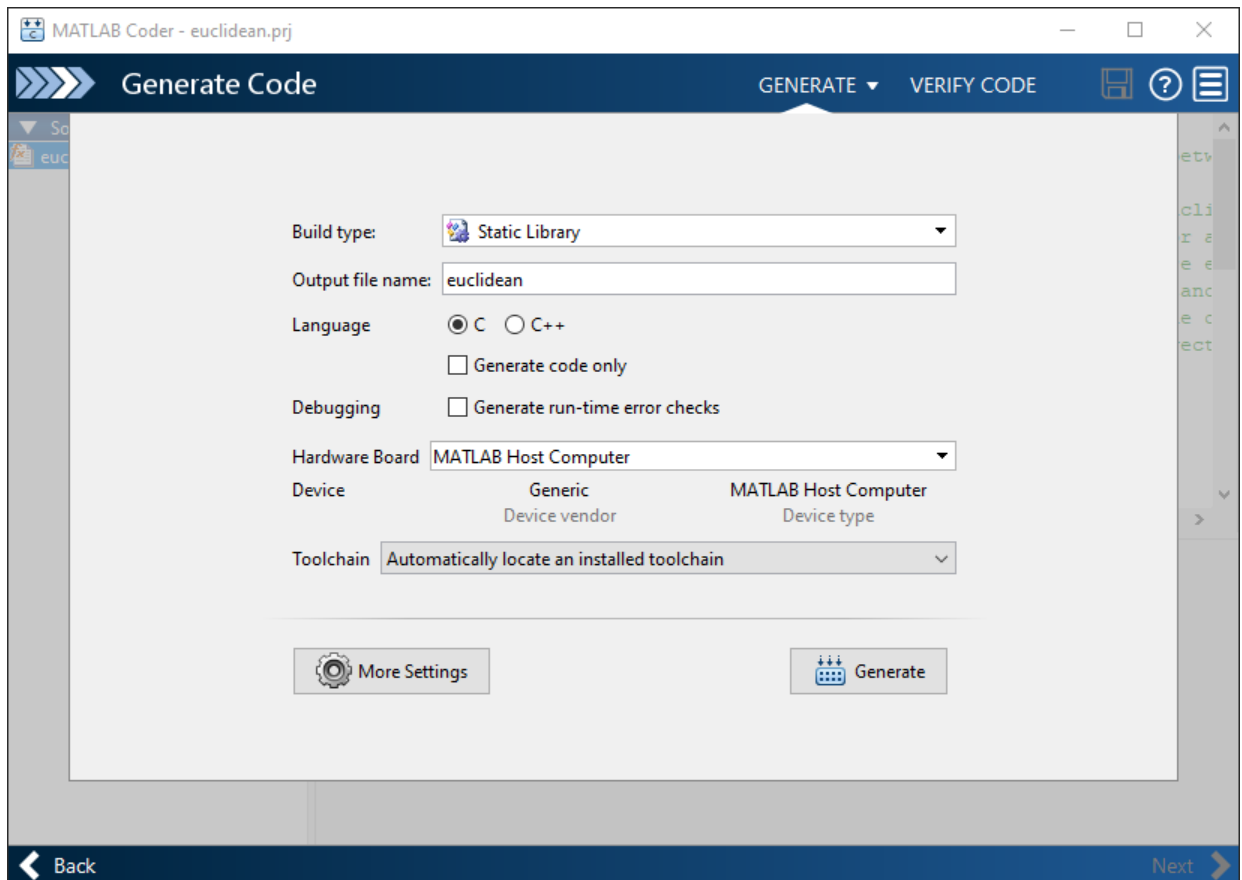
- 5 Click **Next** to go to the **Generate Code** step.

### Generate C Code

- 1 To open the **Generate** dialog box, click the **Generate** arrow .

- 2 In the **Generate** dialog box, set **Build type** to **Static Library (.lib)** and **Language** to **C**. Use the default values for the other project build configuration settings.

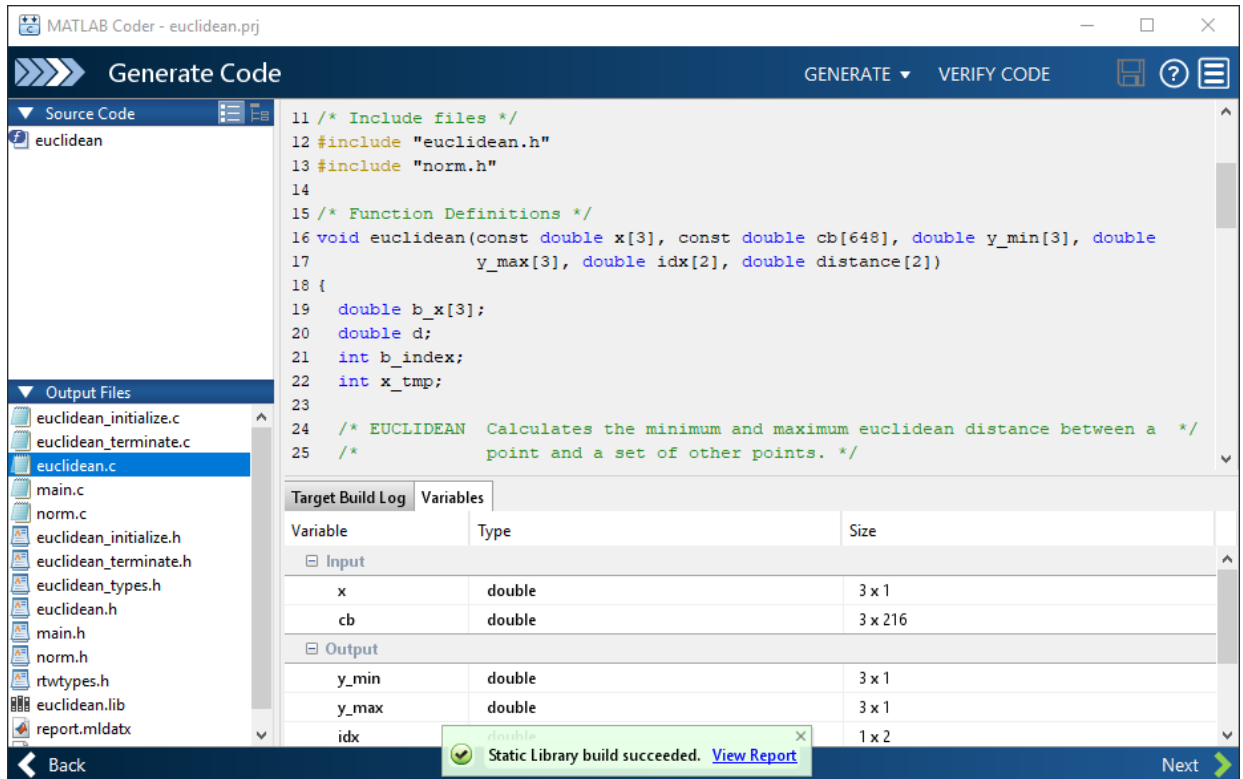
Instead of generating a C static library, you can choose to generate a MEX function or other C/C++ build types. Different project settings are available for the MEX and C/C++ build types. When you switch between MEX and C/C++ code generation, verify the settings that you choose.



- 3 Click **Generate**.

MATLAB Coder generates a standalone C static library `euclidean` in the `work\codegen\lib\euclidean`. `work` is the folder that contains your tutorial files. The

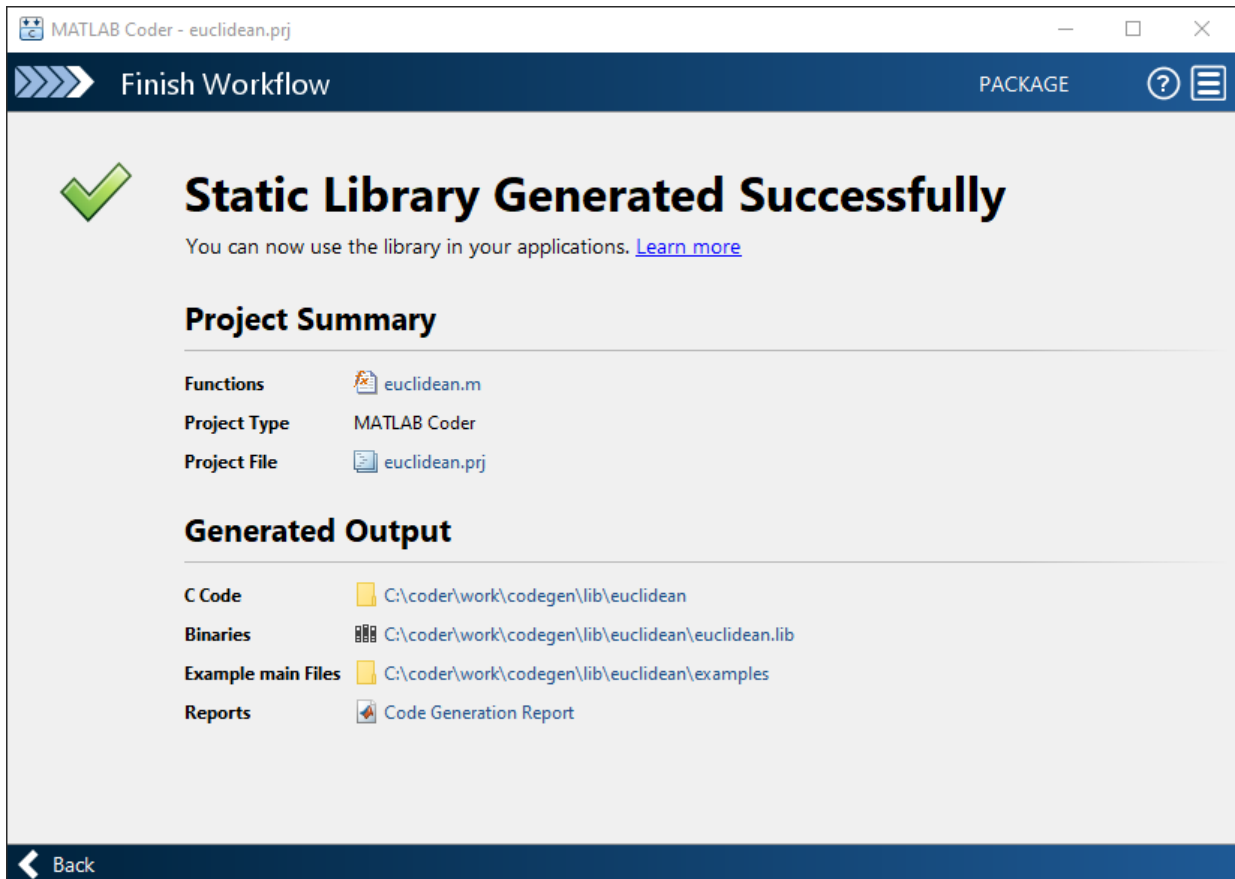
MATLAB Coder app indicates that code generation succeeded. It displays the source MATLAB files and generated output files on the left side of the page. On the **Variables** tab, it displays information about the MATLAB source variables. On the **Target Build Log** tab, it displays the build log, including C/C++ compiler warnings and errors. By default, in the code window, the app displays the C source code file, `euclidean.c`. To view a different file, in the **Source Code** or **Output Files** pane, click the file name.



- 4 Click **View Report** to view the report in the Report Viewer. If the code generator detects errors or warnings during code generation, the report describes the issues and provides links to the problematic MATLAB code. For more information, see “Code Generation Reports”.
- 5 Click **Next** to open the **Finish Workflow** page.

## Review the Finish Workflow Page

The **Finish Workflow** page indicates that code generation succeeded. It provides a project summary and links to generated output.



## Compare the Generated C Code to Original MATLAB Code

To compare your generated C code to the original MATLAB code, open the C file, `euclidean.c`, and the `euclidean.m` file in the MATLAB Editor.

Important information about the generated C code:

- The function signature is:

```
void euclidean(const double x[3], const double cb[648], double y_min[3], double
              y_max[3], double idx[2], double distance[2])
```

`const double x[3]` corresponds to the input `x` in your MATLAB code. The size of `x` is 3, which corresponds to the total size (3 x 1) of the example input that you used when you generated code from your MATLAB code.

`const double cb[648]` corresponds to the input `cb` in your MATLAB code. The size of `cb` is 648, which corresponds to the total size (3 x 216) of the example input that you used when you generated code from your MATLAB code. In this case, the generated code uses a one-dimensional array to represent a two-dimensional array in the MATLAB code.

The generated code has four additional input arguments: the arrays `y_min`, `y_max`, `idx`, and `distance`. These arrays are used to return the output values. They correspond to the output arguments `y_min`, `y_max`, `idx`, and `distance` in the original MATLAB code.

- The code generator preserves your function name and comments. When possible, the code generator preserves your variable names.

---

**Note** If a variable in your MATLAB code is set to a constant value, it does not appear as a variable in the generated C code. Instead, the generated C code contains the actual value of the variable.

---

With Embedded Coder, you can interactively trace between MATLAB code and generated C/C++ code. See “Interactively Trace Between MATLAB Code and Generated C/C++ Code” (Embedded Coder).

## Generate C Code for Variable-Size Inputs

The C function that you generated for `euclidean.m` can accept only inputs that have the same size as the sample inputs that you specified during code generation. However, the input arrays to the corresponding MATLAB function can be of any size. In this part of the tutorial, you generate C code from `euclidean.m` that accepts variable-size inputs.

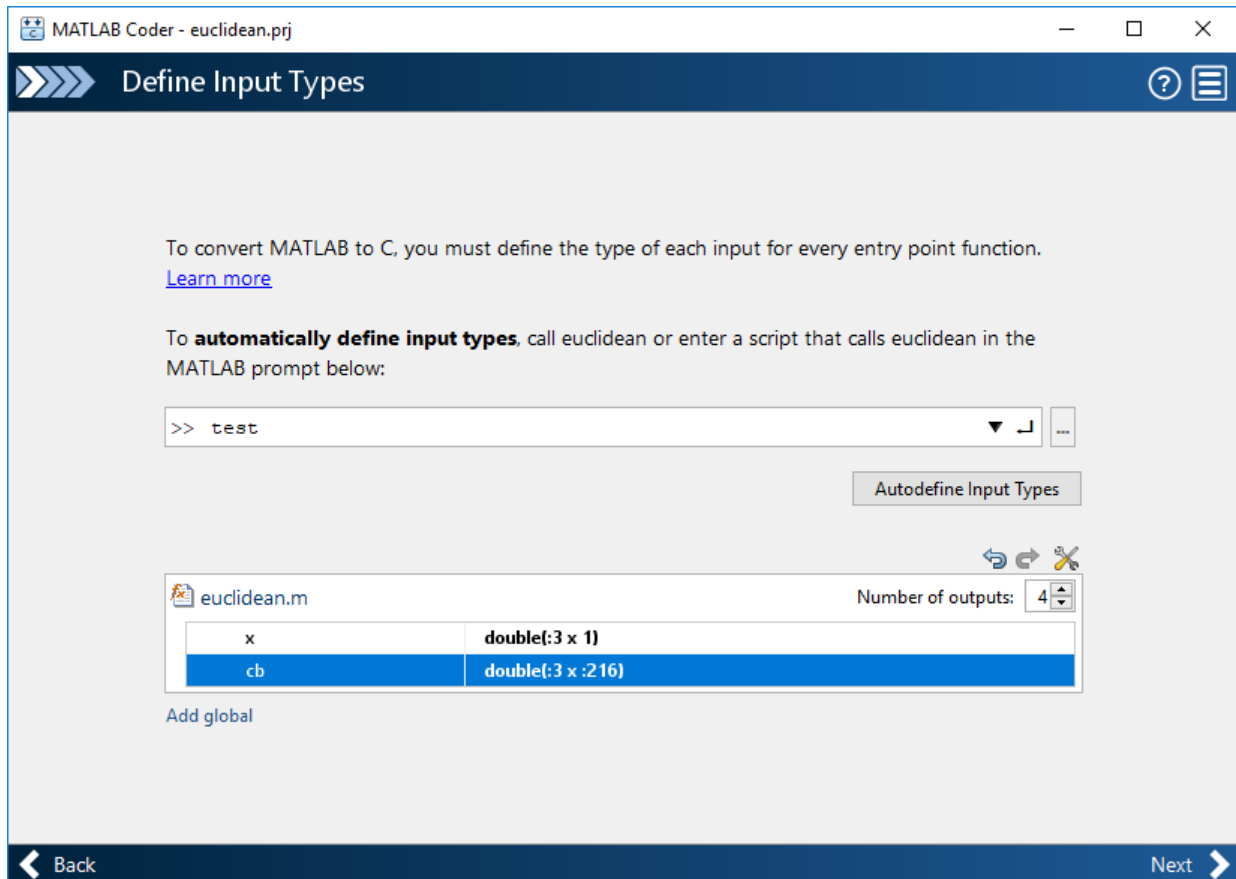
Suppose that you want the dimensions of `x` and `cb` in the generated C code to have these properties:



- The first dimension of both `x` and `cb` can vary in size up to 3.
- The second dimension of `x` is fixed and has the value 1.
- The second dimension of `cb` can vary in size up to 216.

To specify these input properties:

- 1 In the **Define Input Types** step, enter the test file `test.m` and click **Autodefine Input Types** as before. The test file calls the entry-point function, `euclidean.m`, with the expected input types. The app determines that the input `x` is `double(3x1)` and the input `cb` is `double(3x216)`. These types specify fixed-size inputs.
- 2 Click the input type specifications and edit them. You can specify variable size, up to a specified limit, by using the `:` prefix. For example, `:3` implies that the corresponding dimension can vary in size up to 3. Change the types to `double(:3 x 1)` for `x` and `double(:3 x :216)` for `cb`.



You can now generate code by following the same steps as before. The function signature for the generated C code in `euclidean.c` now reads:

```
void euclidean(const double x_data[], const int x_size[1], const double cb_data[],
               const int cb_size[2], double y_min_data[], int y_min_size[1],
               double y_max_data[], int y_max_size[1], double idx[2], double
               distance[2])
```

The arguments `x_data`, `cb_data`, `y_min_data`, and `y_max_data` correspond to the input arguments `x` and `cb` and the output arguments `y_min` and `y_max` in the original MATLAB function. The C function now accepts four additional input arguments `x_size`,

`cb_size`, `y_min_size`, and `y_max_size` that specify the sizes of `x_data`, `cb_data`, `y_min_data`, and `y_max_data` at run time.

## Next Steps

Goal	More Information
Learn about code generation support for MATLAB built-in functions and toolbox functions, classes, and System objects	"Functions and Objects Supported for C/C++ Code Generation"
Generate and modify an example C main function and use it to build a C executable program	"Use an Example C Main in an Application"
Package generated files into a compressed file	"Package Code for Other Development Environments"
Optimize the execution speed or memory usage of generated code	"Optimization Strategies"
Integrate your custom C/C++ code into the generated code	"Call C/C++ Code from MATLAB Code"
Learn about the code generation report	"Code Generation Reports"  "Interactively Trace Between MATLAB Code and Generated C/C++ Code" (Embedded Coder)

## See Also

## Generate C Code at the Command Line

In this tutorial, you use the MATLAB Coder `codegen` command to generate a static C library for a MATLAB function. You first generate C code that can accept only inputs that have fixed preassigned size. You then generate C code that can accept inputs of many different sizes.

You can also generate code by using the MATLAB Coder app. For a tutorial on this workflow, see “Generate C Code by Using the MATLAB Coder App” on page 2-2.

### Tutorial Files

Copy the tutorial files from the folder `matlabroot\help\toolbox\coder\examples\euclidean` to a local working folder. Here, `matlabroot` is the MATLAB installation folder, for example, `C:\Program Files\MATLAB\R2019a`. To copy these files to your current folder, run this MATLAB command:

```
copyfile(fullfile(matlabroot, 'help', 'toolbox', 'coder', 'examples', 'euclidean'))
```

This tutorial uses the `euclidean_data.mat`, `euclidean.m`, `test.m`, `build_lib_fixed.m`, and `build_lib_variable.m` files.

- The MATLAB data file `euclidean_data.mat` contains two pieces of data: a single point in three-dimensional Euclidean space and a set of several other points in three-dimensional Euclidean space. More specifically:
  - `x` is a 3-by-1 column vector that represents a point in three-dimensional Euclidean space.
  - `cb` is a 3-by-216 array. Each column in `cb` represents a point in three-dimensional Euclidean space.
- The MATLAB file `euclidean.m` contains the function `euclidean` that implements the *core algorithm* in this example. The function takes `x` and `cb` as inputs. It calculates the Euclidean distance between `x` and each point in `cb` and returns these quantities:
  - The column vector `y_min`, which is equal to the column in `cb` that represents the point that is closest to `x`.
  - The column vector `y_max`, which is equal to the column in `cb` that represents the point that is farthest from `x`.
  - The 2-dimensional vector `idx` that contains the column indices of the vectors `y_min` and `y_max` in `cb`.

- The 2-dimensional vector distance that contains the calculated smallest and largest distances to  $x$ .

```
function [y_min,y_max,idx,distance] = euclidean(x,cb)
% Initialize minimum distance as distance to first element of cb
% Initialize maximum distance as distance to first element of cb
idx(1)=1;
idx(2)=1;

distance(1)=norm(x-cb(:,1));
distance(2)=norm(x-cb(:,1));

% Find the vector in cb with minimum distance to x
% Find the vector in cb with maximum distance to x
for index=2:size(cb,2)
    d=norm(x-cb(:,index));
    if d < distance(1)
        distance(1)=d;
        idx(1)=index;
    end
    if d > distance(2)
        distance(2)=d;
        idx(2)=index;
    end
end

% Output the minimum and maximum distance vectors
y_min=cb(:,idx(1));
y_max=cb(:,idx(2));

end
```

- The MATLAB script `test.m` loads the data file `euclidean_data.mat` into the workspace. It then calls the function `euclidean` to calculate `y_min`, `y_max`, `idx`, and `distance`. The script then displays the calculated quantities at the command line.

Loading `euclidean_data.mat` is the preprocessing step that is executed before calling the core algorithm. Displaying the results is the post-processing step.

```
% Load test data
load euclidean_data.mat

% Determine closest and farthest points and corresponding distances
[y_min,y_max,idx,distance] = euclidean(x,cb);
```

```
% Display output for the closest point
disp('Coordinates of the closest point are: ');
disp(num2str(y_min));
disp(['Index of the closest point is ', num2str(idx(1))]);
disp(['Distance to the closest point is ', num2str(distance(1))]);

disp(newline);

% Display output for the farthest point
disp('Coordinates of the farthest point are: ');
disp(num2str(y_max));
disp(['Index of the farthest point is ', num2str(idx(2))]);
disp(['Distance to the farthest point is ', num2str(distance(2))]);
```

- The build scripts `build_lib_fixed.m` and `build_lib_variable.m` contain commands for generating static C libraries from your MATLAB code that accept fixed-size and variable-size inputs, respectively. The contents of these scripts are shown later in the tutorial, when you generate the C code.

---

**Tip** You can generate code from MATLAB functions by using MATLAB Coder. Code generation from MATLAB scripts is not supported.

Use test scripts to separate the pre- and post-processing steps from the function implementing the core algorithm. This practice enables you to easily reuse your algorithm. You generate code for the MATLAB function that implements the core algorithm. You do not generate code for the test script.

---

## Generate C Code for the MATLAB Function

### Run the Original MATLAB Code

Run the test script `test.m` in MATLAB. The output displays `y`, `idx`, and `distance`.

```
Coordinates of the closest point are:
0.8      0.8      0.4
Index of the closest point is 171
Distance to the closest point is 0.080374
```

```
Coordinates of the farthest point are:
0  0  1
```

```
Index of the farthest point is 6
Distance to the farthest point is 1.2923
```

## Make the MATLAB Code Suitable for Code Generation

To make your MATLAB code suitable for code generation, you use the Code Analyzer and the Code Generation Readiness Tool. The Code Analyzer in the MATLAB Editor continuously checks your code as you enter it. It reports issues and recommends modifications to maximize performance and maintainability. The Code Generation Readiness Tool screens the MATLAB code for features and functions that are not supported for code generation.

Certain MATLAB built-in functions and toolbox functions, classes, and System objects that are supported for C/C++ code generation have specific code generation limitations. These limitations and related usage notes are listed in the **Extended Capabilities** sections of their corresponding reference pages. For more information, see “Functions and Objects Supported for C/C++ Code Generation”.

- 1 Open `euclidean.m` in the MATLAB Editor. The Code Analyzer message indicator in the top right corner of the MATLAB Editor is green. The analyzer did not detect errors, warnings, or opportunities for improvement in the code.
- 2 After the function declaration, add the `%#codegen` directive:

```
function [y,idx,distance] = euclidean(x,cb) %#codegen
```

The `%#codegen` directive prompts the Code Analyzer to identify warnings and errors specific to code generation.

The Code Analyzer message indicator becomes red, indicating that it has detected code generation issues.

```

1  function [y_min,y_max,idx,distance] = euclidean(x,cb) %#codegen
2  % Initialize minimum distance as distance to first element of cb
3  % Initialize maximum distance as distance to first element of cb
4  -  idx(1)=1;
5  -  idx(2)=1;
6
7  -  distance(1)=norm(x-cb(:,1));
8  -  distance(2)=norm(x-cb(:,1));
9
10 % Find the vector in cb with minimum distance to x
11 % Find the vector in cb with maximum distance to x

```

- 3 To view the warning messages, move your cursor to the underlined code fragments. The warnings indicate that code generation requires the variables `idx` and `distance` to be fully defined before subscripting them. These warnings appear because the code generator must determine the sizes of these variables at their first appearance in the code. To fix this issue, use the `ones` function to simultaneously allocate and initialize these arrays.

```

% Initialize minimum distance as distance to first element of cb
% Initialize maximum distance as distance to first element of cb
idx = ones(1,2);

```

```

distance = ones(1,2)*norm(x-cb(:,1));

```

The Code Analyzer message indicator becomes green again, indicating that it does not detect any more code generation issues.

```

1  function [y_min,y_max,idx,distance] = euclidean(x,cb) %#codegen
2  % Initialize minimum distance as distance to first element of cb
3  % Initialize maximum distance as distance to first element of cb
4  -  idx = ones(1,2);
5
6  -  distance = ones(1,2)*norm(x-cb(:,1));
7
8  % Find the vector in cb with minimum distance to x
9  % Find the vector in cb with maximum distance to x

```

For more information about using the Code Analyzer, see “Check Code for Errors and Warnings” (MATLAB).



- 4 Save the file.
- 5 To run the Code Generation Readiness Tool, call the `coder.screener` function from the MATLAB command line.

```
coder.screener('euclidean')
```

The tool does not detect any code generation issues for `euclidean`. For more information, see “Code Generation Readiness Tool”.

The Code Generation Readiness Tool is not supported in MATLAB Online.

---

**Note** The Code Analyzer and the Code Generation Readiness Tool might not detect all code generation issues. After eliminating the errors or warnings that these tools detect, generate code by using MATLAB Coder to determine if your MATLAB code has other compliance issues.

---

You are now ready to compile your code by using the MATLAB Coder app. Here, compilation refers to the generation of C/C++ code from your MATLAB code.

---

**Note** Compilation of MATLAB code refers to the generation of C/C++ code from the MATLAB code. In other contexts, the term compilation could refer to the action of a C/C++ compiler.

---

## Defining Input Types

Because C uses static typing, the code generator must determine the class, size, and complexity of all variables in the MATLAB files at code generation time, also known as *compile time*. Therefore, when you generate code for the files, you must specify the properties of all input arguments to the entry-point functions. An entry-point function is a top-level MATLAB function from which you generate code.

When you generate code by using the `codegen` command, use the `-args` option to specify sample input parameters to the entry-point functions. The code generator uses this information to determine the properties of the input arguments.

In the next step, you use the `codegen` command to generate a MEX file from your entry-point function `euclidean`.

## Check for Run-Time Issues

You generate a MEX function from your entry-point function. A MEX function is generated code that can be called from inside MATLAB. You run the MEX function and check whether the generated MEX function and the original MATLAB function have the same functionality.

It is a best practice to perform this step because you can detect and fix run-time errors that are harder to diagnose in the generated C code. By default, the MEX function includes memory integrity checks. These checks perform array bounds and dimension checking. The checks detect violations of memory integrity in code generated for MATLAB functions. For more information, see “Control Run-Time Checks”.

To convert MATLAB code to efficient C/C++ source code, the code generator introduces optimizations that, in certain situations, cause the generated code to behave differently than the original source code. See “Differences Between Generated Code and MATLAB Code”.

- 1 Generate a MEX file for `euclidean.m` by using the `codegen` command. To verify the MEX function, run the test script `test` with calls to the MATLAB function `euclidean` replaced with calls to the generated MEX function.

```
codegen euclidean.m -args {x,cb} -test test
```

- By default, `codegen` generates a MEX function named `euclidean_mex` in the current folder.
- You use the `-args` option to specify sample input parameters to the entry-point function `euclidean`. The code generator uses this information to determine the properties of the input arguments.
- You use the `-test` option to run the test file `test.m`. This option replaces the calls to `euclidean` in the test file with calls to `euclidean_mex`.

The output is:

```
Running test file: 'test' with MEX function 'euclidean_mex'.
Coordinates of the closest point are:
0.8      0.8      0.4
Index of the closest point is 171
Distance to the closest point is 0.080374
```

```
Coordinates of the farthest point are:
```

```
0 0 1
Index of the farthest point is 6
Distance to the farthest point is 1.2923
```

This output matches the output that was generated by the original MATLAB function and verifies the MEX function. Now you are ready to generate standalone C code for `euclidean`.

## Generate C Code

The build script `build_lib_fixed.m` contains the commands that you use to generate code for `euclidean.m`.

```
% Load the test data
load euclidean_data.mat
% Generate code for euclidean.m with codegen. Use the test data as example input.
codegen -report -config:lib euclidean.m -args {x, cb}
```

Note that:

- `codegen` reads the file `euclidean.m` and translates the MATLAB code into C code.
- The `-report` option instructs `codegen` to generate a code generation report that you can use to debug code generation issues and verify that your MATLAB code is suitable for code generation.
- The `-config:lib` option instructs `codegen` to generate a static C library instead of generating the default MEX function.
- The `-args` option instructs `codegen` to generate code for `euclidean.m` using the class, size, and complexity of the sample input parameters `x` and `cb`.

Instead of generating a C static library, you can choose to generate a MEX function or other C/C++ build types by using suitable options with the `codegen` command. For more information on the various code generation options, see `codegen`.

- 1 Run the build script.

MATLAB processes the build file and outputs the message:

```
Code generation successful: View report.
```

The code generator produces a standalone C static library `euclidean` in `work\codegen\lib\euclidean`. Here, `work` is the folder that contains your tutorial files.

- 2 To view the code generation report in the Report Viewer, click **View report** .

If the code generator detects errors or warnings during code generation, the report describes the issues and provides links to the problematic MATLAB code. See “Code Generation Reports”.

---

**Tip** Use a build script to generate code at the command line. A build script automates a series of MATLAB commands that you perform repeatedly at the command line, saving you time and eliminating input errors.

---

### Compare the Generated C Code to Original MATLAB Code

To compare your generated C code to the original MATLAB code, open the C file, `euclidean.c`, and the `euclidean.m` file in the MATLAB Editor.

Important information about the generated C code:

- The function signature is:

```
void euclidean(const double x[3], const double cb[648], double y_min[3], double
              y_max[3], double idx[2], double distance[2])
```

`const double x[3]` corresponds to the input `x` in your MATLAB code. The size of `x` is 3, which corresponds to the total size (3 x 1) of the example input you used when you generated code for your MATLAB code.

`const double cb[648]` corresponds to the input `cb` in your MATLAB code. The size of `cb` is 648, which corresponds to the total size (3 x 216) of the example input you used when you generated code for your MATLAB code. In this case, the generated code uses a one-dimensional array to represent a two-dimensional array in the MATLAB code.

The generated code has four additional input arguments: the arrays `y_min`, `y_max`, `idx`, and `distance`. These arrays are used to return the output values. They correspond to the output arguments `y_min`, `y_max`, `idx`, and `distance` in the original MATLAB code.

- The code generator preserves your function name and comments. When possible, the code generator preserves your variable names.

---

**Note** If a variable in your MATLAB code is set to a constant value, it does not appear as a variable in the generated C code. Instead, the generated C code contains the actual value of the variable.

---

With Embedded Coder, you can interactively trace between MATLAB code and generated C/C++ code. See “Interactively Trace Between MATLAB Code and Generated C/C++ Code” (Embedded Coder).

## Generate C Code for Variable-Size Inputs

The C function that you generated for `euclidean.m` can accept only inputs that have the same size as the sample inputs that you specified during code generation. However, the input arrays to the corresponding MATLAB function can be of any size. In this part of the tutorial, you generate C code from `euclidean.m` that accepts variable-size inputs.

Suppose that you want the dimensions of `x` and `cb` in the generated C code to have these properties:

- The first dimension of both `x` and `cb` can vary in size up to 3.
- The second dimension of `x` is fixed and has the value 1.
- The second dimension of `cb` can vary in size up to 216.

To specify these input properties, use the `coder.typeof` function.

`coder.typeof(A,B,1)` specifies a variable-size input with the same class and complexity as `A` and upper bounds given by the corresponding element of the size vector `B`. Use the build script `build_lib_variable.m` that uses `coder.typeof` to specify the properties of variable-size inputs in the generated C library.

```
% Load the test data
load euclidean_data.mat

% Use coder.typeof to specify variable-size inputs
eg_x=coder.typeof(x,[3 1],1);
eg_cb=coder.typeof(cb,[3 216],1);

% Generate code for euclidean.m using coder.typeof to specify
% upper bounds for the example inputs
codegen -report -config:lib euclidean.m -args {eg_x,eg_cb}
```

You can now generate code by following the same steps as before. The function signature for the generated C code in `euclidean.c` now reads:

```
void euclidean(const double x_data[], const int x_size[1], const double cb_data[],
              const int cb_size[2], double y_min_data[], int y_min_size[1],
              double y_max_data[], int y_max_size[1], double idx[2], double
              distance[2])
```

The arguments `x_data`, `cb_data`, `y_min_data`, and `y_max_data` correspond to the input arguments `x` and `cb` and the output arguments `y_min` and `y_max` in the original MATLAB function. The C function now accepts four additional input arguments `x_size`, `cb_size`, `y_min_size` and `y_max_size` that specify the sizes of `x_data`, `cb_data`, `y_min_data`, and `y_max_data` at run time.

## Next Steps

Goal	More Information
Learn about code generation support for MATLAB built-in functions and toolbox functions, classes, and System objects	"Functions and Objects Supported for C/C++ Code Generation"
Generate and modify an example C main function and use it to build a C executable program	"Use an Example C Main in an Application"
Package generated files into a compressed file	"Package Code for Other Development Environments"
Optimize the execution speed or memory usage of generated code	"Optimization Strategies"
Integrate your custom C/C++ code into the generated code	"Call C/C++ Code from MATLAB Code"
Learn about the code generation report	"Code Generation Reports"  "Interactively Trace Between MATLAB Code and Generated C/C++ Code" (Embedded Coder)

## See Also

`codegen` | `coder.screener`

# Accelerate MATLAB Algorithm by Generating MEX Function

You can use MATLAB Coder to generate a MEX function from your MATLAB code. A MEX function is a MATLAB executable. It is generated code that can be called from inside MATLAB. While working inside the MATLAB environment, use MEX functions to accelerate the computationally intensive portions of your MATLAB code. Generate a MEX function from your MATLAB code by using the MATLAB Coder app or by using `codegen` at the MATLAB command line.

In this tutorial, you use the MATLAB Coder `codegen` command to generate a MEX function for a MATLAB function. You first generate a MEX function that can accept only inputs that have fixed, preassigned size. You then generate another MEX function that can accept inputs of many different sizes.

## Tutorial Files

Copy the tutorial files from the folder `matlabroot\help\toolbox\coder\examples\euclidean` to a local working folder. Here, `matlabroot` is the MATLAB installation folder, for example, `C:\Program Files\MATLAB\R2019a`. To copy these files to your current folder, run this MATLAB command:

```
copyfile(fullfile(matlabroot, 'help', 'toolbox', 'coder', 'examples', 'euclidean'))
```

This tutorial uses the `euclidean_data.mat`, `euclidean.m`, `test.m`, `test_2d.m`, `build_mex_fixed.m`, and `build_mex_variable.m` files.

- The MATLAB data file `euclidean_data.mat` contains two pieces of data: a single point in three-dimensional Euclidean space and a set of several other points in three-dimensional Euclidean space. More specifically:
  - `x` is a 3-by-1 column vector that represents a point in three-dimensional Euclidean space.
  - `cb` is a 3-by-216 array. Each column in `cb` represents a point in three-dimensional Euclidean space.
- The MATLAB file `euclidean.m` contains the function `euclidean` that implements the *core algorithm* in this example. The function takes `x` and `cb` as inputs. It calculates the Euclidean distance between `x` and each point in `cb` and returns these quantities:

- The column vector `y_min`, which is equal to the column in `cb` that represents the point closest to `x`.
- The column vector `y_max`, which is equal to the column in `cb` that represents the point farthest from `x`.
- The 2-dimensional vector `idx` that contains the column indices of the vectors `y_min` and `y_max` in `cb`.
- The 2-dimensional vector `distance` that contains the calculated smallest and largest distances to `x`.

```
function [y_min,y_max,idx,distance] = euclidean(x,cb)
% Initialize minimum distance as distance to first element of cb
% Initialize maximum distance as distance to first element of cb
idx(1)=1;
idx(2)=1;

distance(1)=norm(x-cb(:,1));
distance(2)=norm(x-cb(:,1));

% Find the vector in cb with minimum distance to x
% Find the vector in cb with maximum distance to x
for index=2:size(cb,2)
    d=norm(x-cb(:,index));
    if d < distance(1)
        distance(1)=d;
        idx(1)=index;
    end
    if d > distance(2)
        distance(2)=d;
        idx(2)=index;
    end
end

% Output the minimum and maximum distance vectors
y_min=cb(:,idx(1));
y_max=cb(:,idx(2));

end
```

- The MATLAB script `test.m` loads the data file `euclidean_data.mat` into the workspace. It calls the function `euclidean` to calculate `y_min`, `y_max`, `idx`, and `distance`. The script then displays the calculated quantities at the command line.



Loading `euclidean_data.mat` is the preprocessing step that is executed before calling the core algorithm. Displaying the results is the post-processing step.

```
% Load test data
load euclidean_data.mat

% Determine closest and farthest points and corresponding distances
[y_min,y_max,idx,distance] = euclidean(x,cb);

% Display output for the closest point
disp('Coordinates of the closest point are: ');
disp(num2str(y_min));
disp(['Index of the closest point is ', num2str(idx(1))]);
disp(['Distance to the closest point is ', num2str(distance(1))]);

disp(newline);

% Display output for the farthest point
disp('Coordinates of the farthest point are: ');
disp(num2str(y_max));
disp(['Index of the farthest point is ', num2str(idx(2))]);
disp(['Distance to the farthest point is ', num2str(distance(2))]);
```

- The MATLAB script `test_2d.m` is a modification of `test.m` for points in two-dimensional Euclidean space. The contents of `test_2d.m` are shown later in the tutorial, when you use it to test the MEX function for variable-size inputs.
- The build scripts `build_mex_fixed.m` and `build_mex_variable.m` contain commands for generating static C libraries from your MATLAB code that accept fixed-size and variable-size inputs, respectively. The contents of these scripts are shown later in the tutorial, when you generate the C code.

---

**Tip** You can generate code from MATLAB functions by using MATLAB Coder. Code generation from MATLAB scripts is not supported.

Use test scripts to separate the pre- and post-processing steps from the function that implements the core algorithm. This practice enables you to easily reuse your algorithm. You generate code for the MATLAB function implementing the core algorithm. You do not generate code for the test script.

---

## Generate MEX Function for the MATLAB Function

### Run the Original MATLAB Code

Run the test script `test.m` in MATLAB. The output displays `y`, `idx`, and `distance`.

```
Coordinates of the closest point are:  
0.8      0.8      0.4  
Index of the closest point is 171  
Distance to the closest point is 0.080374
```

```
Coordinates of the farthest point are:  
0 0 1  
Index of the farthest point is 6  
Distance to the farthest point is 1.2923
```

### Make the MATLAB Code Suitable for Code Generation

To make your MATLAB code suitable for code generation, you use the Code Analyzer and the Code Generation Readiness Tool. The Code Analyzer in the MATLAB Editor continuously checks your code as you enter it. It reports issues and recommends modifications to maximize performance and maintainability. The Code Generation Readiness Tool screens the MATLAB code for features and functions that are not supported for code generation.

Certain MATLAB built-in functions and toolbox functions, classes, and System objects that are supported for C/C++ code generation have specific code generation limitations. These limitations and related usage notes are listed in the **Extended Capabilities** sections of their corresponding reference pages. For more information, see “Functions and Objects Supported for C/C++ Code Generation”.

- 1 Open `euclidean.m` in the MATLAB Editor. The Code Analyzer message indicator in the top right corner of the MATLAB Editor is green. The analyzer did not detect errors, warnings, or opportunities for improvement in the code.
- 2 After the function declaration, add the `%#codegen` directive:

```
function [y,idx,distance] = euclidean(x,cb) %#codegen
```

The `%#codegen` directive prompts the Code Analyzer to identify warnings and errors specific to code generation.

The Code Analyzer message indicator becomes red, indicating that it has detected code generation issues.

```

1  function [y_min,y_max,idx,distance] = euclidean(x,cb) %#codegen
2  % Initialize minimum distance as distance to first element of cb
3  % Initialize maximum distance as distance to first element of cb
4  idx(1)=1;
5  idx(2)=1;
6
7  distance(1)=norm(x-cb(:,1));
8  distance(2)=norm(x-cb(:,1));
9
10 % Find the vector in cb with minimum distance to x
11 % Find the vector in cb with maximum distance to x

```

- To view the warning messages, move your cursor to the underlined code fragments. The warnings indicate that code generation requires the variables `idx` and `distance` to be fully defined before subscripting them. This warning appears because the code generator must determine the sizes of these variables at their first appearance in the code. To fix this issue, use the `ones` function to simultaneously allocate and initialize these arrays.

```

% Initialize minimum distance as distance to first element of cb
% Initialize maximum distance as distance to first element of cb
idx = ones(1,2);

```

```
distance = ones(1,2)*norm(x-cb(:,1));
```

The Code Analyzer message indicator becomes green again, indicating that it does not detect any more code generation issues.

```

1  function [y_min,y_max,idx,distance] = euclidean(x,cb) %#codegen
2  % Initialize minimum distance as distance to first element of cb
3  % Initialize maximum distance as distance to first element of cb
4  idx = ones(1,2);
5
6  distance = ones(1,2)*norm(x-cb(:,1));
7
8  % Find the vector in cb with minimum distance to x
9  % Find the vector in cb with maximum distance to x

```

For more information about using the Code Analyzer, see “Check Code for Errors and Warnings” (MATLAB).

- 4 Save the file.
- 5 To run the Code Generation Readiness Tool, call the `coder.screener` function from the MATLAB command line:

```
coder.screener('euclidean')
```

The tool does not detect any code generation issues for `euclidean`. For more information, see “Code Generation Readiness Tool”.

The Code Generation Readiness Tool is not supported in MATLAB Online.

---

**Note** The Code Analyzer and the Code Generation Readiness Tool might not detect all code generation issues. After eliminating the errors or warnings that these tools detect, generate code by using MATLAB Coder to determine if your MATLAB code has other compliance issues.

---

You are now ready to compile your code by using the MATLAB Coder app. Here, compilation refers to the generation of C/C++ code from your MATLAB code.

---

**Note** Compilation of MATLAB code refers to the generation of C/C++ code from the MATLAB code. In other contexts, the term compilation could refer to the action of a C/C++ compiler.

---

### Defining Input Types

Because C uses static typing, the code generator must determine the class, size, and complexity of all variables in the MATLAB files at code generation time, also known as *compile time*. Therefore, when you generate code for the files, you must specify the properties of all input arguments to the entry-point functions. An entry-point function is a top-level MATLAB function from which you generate code.

When you generate code by using the `codegen` command, use the `-args` option to specify sample input parameters to the entry-point functions. The code generator uses this information to determine the properties of the input arguments.

In the next step, you use the `codegen` command to generate a MEX file from your entry-point function `euclidean`.

## Generate and Validate the MEX Function

The build script `build_mex_fixed.m` contains the commands that you use to generate and validate a MEX function for `euclidean.m`. To validate the MEX function, you run the test script `test` with calls to the MATLAB function `euclidean` replaced with calls to the generated MEX function.

```
% Load the test data
load euclidean_data.mat
% Generate code for euclidean.m with codegen. Use the test data as example input. Valid
codegen -report euclidean.m -args {x, cb} -test test
```

Note that:

- By default, `codegen` generates a MEX function named `euclidean_mex` in the current folder.
- The `-report` option instructs `codegen` to generate a code generation report that you can use to debug code generation issues and verify that your MATLAB code is suitable for code generation.
- The `-args` option specifies sample input parameters to the entry-point function `euclidean`. The code generator uses this information to determine the class, size, and complexity of the input arguments.
- You use the `-test` option to run the test file `test.m`. This option replaces the calls to `euclidean` in the test file with calls to `euclidean_mex`.

For more information on the code generation options, see `codegen`.

- 1 Run the build script `build_mex_fixed.m`.

The code generator produces a MEX function `euclidean_mex` in the current working folder.

The output is:

```
Code generation successful: View report.
Running test file: 'test' with MEX function 'euclidean_mex'.
Coordinates of the closest point are:
0.8      0.8      0.4
Index of the closest point is 171
Distance to the closest point is 0.080374
```

```
Coordinates of the farthest point are:  
0 0 1  
Index of the farthest point is 6  
Distance to the farthest point is 1.2923
```

This output matches the output that was generated by the original MATLAB function and verifies the MEX function.

- 2 To view the code generation report in the Report Viewer, click **View report** .

If the code generator detects errors or warnings during code generation, the report describes the issues and provides links to the problematic MATLAB code. See “Code Generation Reports”.

---

**Tip** Use a build script to generate code at the command line. A build script automates a series of MATLAB commands that you perform repeatedly at the command line, saving you time and eliminating input errors.

---

## Generate MEX Function for Variable-Size Inputs

The MEX function that you generated for `euclidean.m` can accept only inputs that have the same size as the sample inputs that you specified during code generation. However, the input arrays to the corresponding MATLAB function can be of any size. In this part of the tutorial, you generate a MEX function from `euclidean.m` that accepts variable-size inputs.

Suppose that you want the dimensions of `x` and `cb` in the generated MEX function to have these properties:

- The first dimension of both `x` and `cb` can vary in size up to 3.
- The second dimension of `x` is fixed and has the value 1.
- The second dimension of `cb` can vary in size up to 216.

To specify these input properties, you use the `coder.typeof` function. `coder.typeof(A,B,1)` specifies a variable-size input with the same class and complexity as `A` and upper bounds given by the corresponding element of the size vector `B`. Use the build script `build_mex_variable.m` that uses `coder.typeof` to specify the properties of variable-size inputs in the generated MEX function.

```
% Load the test data  
load euclidean_data.mat
```

```

% Use coder.typeof to specify variable-size inputs
eg_x=coder.typeof(x,[3 1],1);
eg_cb=coder.typeof(cb,[3 216],1);

% Generate code for euclidean.m using coder.typeof to specify
% upper bounds for the example inputs
codegen -report euclidean.m -args {eg_x,eg_cb}

```

You can verify that the new MEX function `euclidean_mex` accepts inputs of dimensions different from those of `x` and `cb`. The test script `test_2d.m` creates the input arrays `x2d` and `cb2d` that are two-dimensional versions of `x` and `cb`, respectively. It then calls the MATLAB function `euclidean` by using these input parameters.

```

% Load the test data
load euclidean_data.mat

% Create 2-D versions of x and cb
x2d=x(1:2,:);
cb2d=cb(1:2,1:6:216);

% Determine closest and farthest points and corresponding distances
[y_min,y_max,idx,distance] = euclidean(x2d,cb2d);

% Display output for the closest point
disp('Coordinates of the closest point are: ');
disp(num2str(y_min));
disp(['Index of the closest point is ', num2str(idx(1))]);
disp(['Distance to the closest point is ', num2str(distance(1))]);

disp(newline);

% Display output for the farthest point
disp('Coordinates of the farthest point are: ');
disp(num2str(y_max));
disp(['Index of the farthest point is ', num2str(idx(2))]);
disp(['Distance to the farthest point is ', num2str(distance(2))]);

```

Running `test_2d.m` produces the output:

```

Coordinates of the closest point are:
0.8      0.8
Index of the closest point is 29
Distance to the closest point is 0.078672

```

```
Coordinates of the farthest point are:  
0 0  
Index of the farthest point is 1  
Distance to the farthest point is 1.1357
```

To run the test script `test_2d.m` with the calls to `euclidean` replaced with calls to `euclidean_mex`, use `coder.runTest`.

```
coder.runTest('test_2d', 'euclidean')
```

The output matches the output generated by the original MATLAB function. This verifies the fact that the new MEX function can accept inputs of dimensions different from those of `x` and `cb`.

### Next Steps

Goal	More Information
Learn about code generation support for MATLAB built-in functions and toolbox functions, classes, and System objects	“Functions and Objects Supported for C/C++ Code Generation”
Optimize the execution speed or memory usage of generated code	“Optimization Strategies”
Learn about the code generation report	“Code Generation Reports”
See execution times and code coverage for generated MEX functions in MATLAB Profiler	“Profile MEX Functions by Using MATLAB Profiler”

### See Also

`codegen` | `coder.runTest` | `coder.screener`



# Hello World

This example shows how to generate a MEX function from a simple MATLAB function using the `codegen` command. You can use `codegen` to check that your MATLAB code is suitable for code generation and, in many cases, to accelerate your MATLAB algorithm. You can run the MEX function to check for run-time errors.

## Prerequisites

There are no prerequisites for this example.

## About the 'hello\_world' Function

The `hello_world.m` function simply returns the string 'Hello World!'.

```
type hello_world
```

```
function y = hello_world
%#codegen
y = 'Hello World!';
```

The `%#codegen` directive indicates that the MATLAB code is intended for code generation.

## Generate the MEX Function

First, generate a MEX function using the command `codegen` followed by the name of the MATLAB file to compile.

```
codegen hello_world
```

By default, `codegen` generates a MEX function named `hello_world_mex` in the current folder. This allows you to test the MATLAB code and MEX function and compare the results.

## Run the MEX Function

Run the MEX function to compare its behavior to that of the original MATLAB function and to check for run-time errors.

```
hello_world_mex
```

```
ans =  
'Hello World!'
```

## Averaging Filter

This example shows the recommended workflow for generating C code from a MATLAB function using the `codegen` command. These are the steps:

1. Add the `%#codegen` directive to the MATLAB function to indicate that it is intended for code generation. This directive also enables the MATLAB code analyzer to identify warnings and errors specific to MATLAB for code generation.
2. Generate a MEX function to check that the MATLAB code is suitable for code generation. If errors occur, you should fix them before generating C code.
3. Test the MEX function in MATLAB to ensure that it is functionally equivalent to the original MATLAB code and that no run-time errors occur.
4. Generate C code.
5. Inspect the C code.

### Prerequisites

There are no prerequisites for this example.

### About the `averaging_filter` Function

The `averaging_filter.m` function acts as an averaging filter on the input signal; it takes an input vector of values and computes an average for each value in the vector. The output vector is the same size and shape as the input vector.

```
type averaging_filter
```

```
% y = averaging_filter(x)
% Take an input vector signal 'x' and produce an output vector signal 'y' with
% same type and shape as 'x' but filtered.
function y = averaging_filter(x) %#codegen
% Use a persistent variable 'buffer' that represents a sliding window of
% 16 samples at a time.
persistent buffer;
if isempty(buffer)
    buffer = zeros(16,1);
end
y = zeros(size(x), class(x));
for i = 1:numel(x)
```

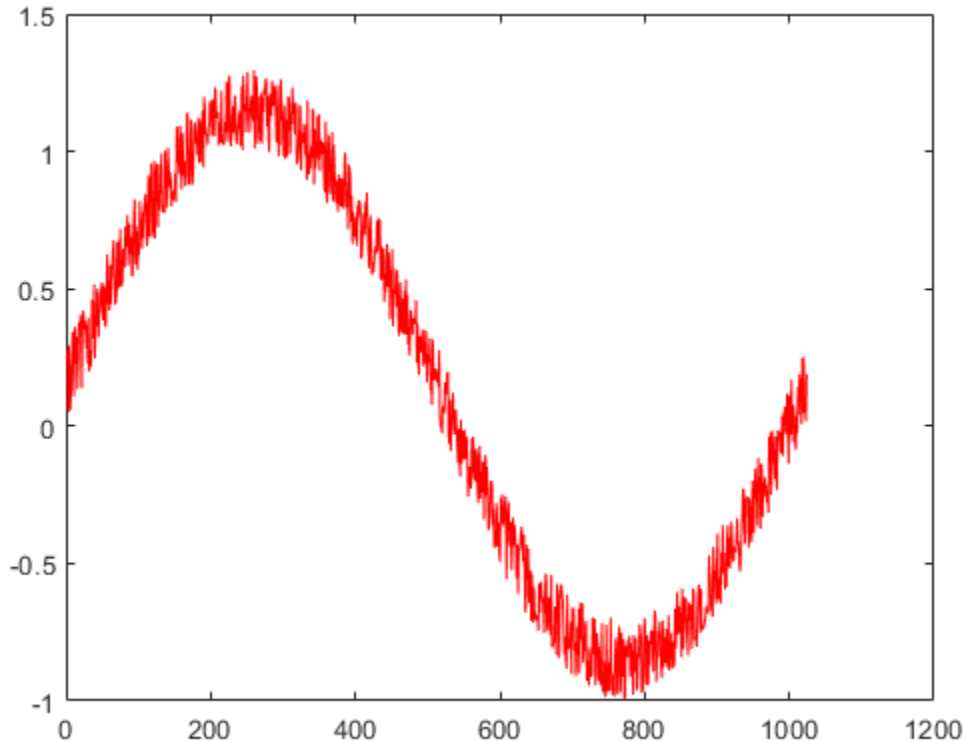
```
% Scroll the buffer
buffer(2:end) = buffer(1:end-1);
% Add a new sample value to the buffer
buffer(1) = x(i);
% Compute the current average value of the window and
% write result
y(i) = sum(buffer)/numel(buffer);
end
```

The `%#codegen` compilation directive indicates that the MATLAB code is intended for code generation.

### **Create Some Sample Data**

Generate a noisy sine wave and plot the result.

```
v = 0:0.00614:2*pi;
x = sin(v) + 0.3*rand(1,numel(v));
plot(x, 'red');
```



### Generate a MEX Function for Testing

Generate a MEX function using the `codegen` command. The `codegen` command checks that the MATLAB function is suitable for code generation and generates a MEX function that you can test in MATLAB prior to generating C code.

```
codegen averaging_filter -args {x}
```

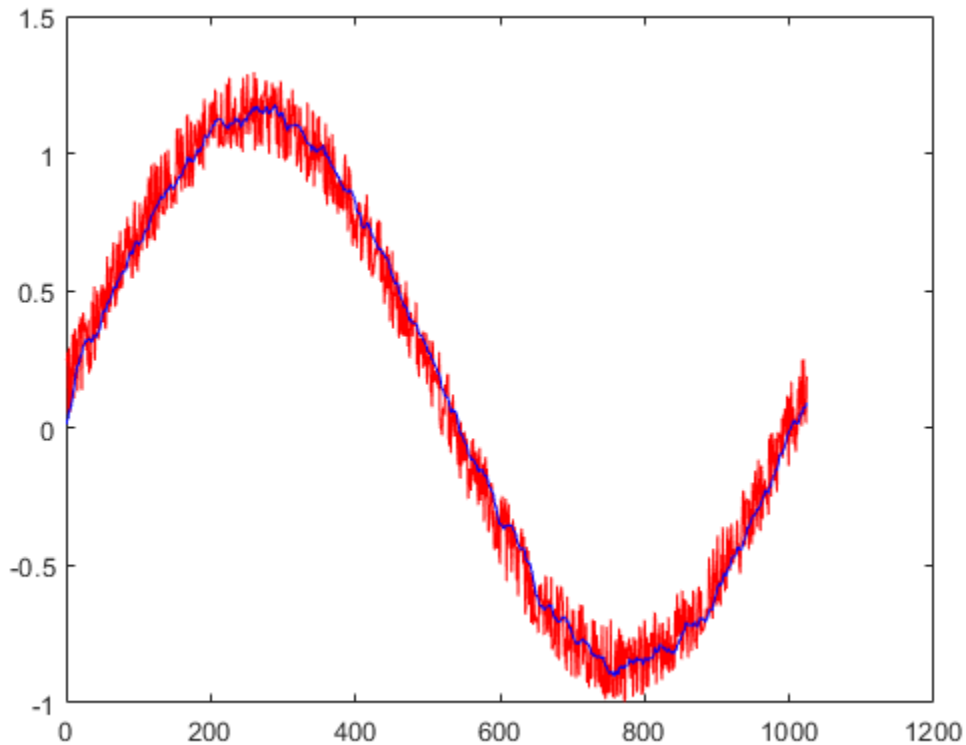
Because C uses static typing, `codegen` must determine the properties of all variables in the MATLAB files at compile time. Here, the `-args` command-line option supplies an example input so that `codegen` can infer new types based on the input types. Using the sample signal created above as the example input ensures that the MEX function can use the same input.

By default, `codegen` generates a MEX function named `averaging_filter_mex` in the current folder. This allows you to test the MATLAB code and MEX function and compare the results.

### Test the MEX Function in MATLAB

Run the MEX function in MATLAB

```
y = averaging_filter_mex(x);  
% Plot the result when the MEX function is applied to the noisy sine wave.  
% The 'hold on' command ensures that the plot uses the same figure window as  
% the previous plot command.  
hold on;  
plot(y, 'blue');
```



## Generate C Code

```
codegen -config coder.config('lib') averaging_filter -args {x}
```

## Inspect the Generated Code

The `codegen` command with the `-config coder.config('lib')` option generates C code packaged as a standalone C library. The generated C code is in the `codegen/lib/averaging_filter/` folder. The files are:

```
dir codegen/lib/averaging_filter/
```

```
.          averaging_filter_rtw_comp.rsp
..         averaging_filter_rtw_ref.rsp
averaging_filter.c      averaging_filter_terminate.c
averaging_filter.h      averaging_filter_terminate.h
averaging_filter.lib    averaging_filter_terminate.obj
averaging_filter.obj    averaging_filter_types.h
averaging_filter_data.c buildInfo.mat
averaging_filter_data.h codeInfo.mat
averaging_filter_data.obj codedescriptor.dmr
averaging_filter_initialize.c examples
averaging_filter_initialize.h interface
averaging_filter_initialize.obj rtw_proj.tmw
averaging_filter_ref.rsp  rtwtypes.h
averaging_filter_rtw.bat  setup_msvc.bat
averaging_filter_rtw.mk
averaging_filter_rtw.rsp
```

## Inspect the C Code for the `averaging_filter.c` Function

```
type codegen/lib/averaging_filter/averaging_filter.c
```

```
/*
 * File: averaging_filter.c
 *
 * MATLAB Coder version      : 4.3
 * C/C++ source code generated on : 26-Aug-2019 10:47:06
 */

/* Include Files */
#include "averaging_filter.h"
#include "averaging_filter_data.h"
#include "averaging_filter_initialize.h"
#include <string.h>
```

```
/* Variable Definitions */
static double buffer[16];

/* Function Definitions */

/*
 * Use a persistent variable 'buffer' that represents a sliding window of
 * 16 samples at a time.
 * Arguments      : const double x[1024]
 *                  double y[1024]
 * Return Type    : void
 */
void averaging_filter(const double x[1024], double y[1024])
{
    int i;
    double dv[15];
    double b_y;
    int k;
    if (isInitialized_averaging_filter == false) {
        averaging_filter_initialize();
    }

    /* y = averaging_filter(x) */
    /* Take an input vector signal 'x' and produce an output vector signal 'y' with */
    /* same type and shape as 'x' but filtered. */
    for (i = 0; i < 1024; i++) {
        /* Scroll the buffer */
        memcpy(&dv[0], &buffer[0], 15U * sizeof(double));

        /* Add a new sample value to the buffer */
        buffer[0] = x[i];

        /* Compute the current average value of the window and */
        /* write result */
        b_y = buffer[0];
        for (k = 0; k < 15; k++) {
            buffer[k + 1] = dv[k];
            b_y += dv[k];
        }

        y[i] = b_y / 16.0;
    }
}
```



```
/*
 * Arguments   : void
 * Return Type : void
 */
void averaging_filter_init(void)
{
    memset(&buffer[0], 0, 16U * sizeof(double));
}

/*
 * File trailer for averaging_filter.c
 *
 * [EOF]
 */
```



# Best Practices for Working with MATLAB Coder

---

- “Recommended Compilation Options for codegen” on page 3-2
- “Testing MEX Functions in MATLAB” on page 3-3
- “Comparing C Code and MATLAB Code Using Tiling in the MATLAB Editor” on page 3-4
- “Using Build Scripts” on page 3-5
- “Check Code Using the MATLAB Code Analyzer” on page 3-7
- “Separating Your Test Bench from Your Function Code” on page 3-8
- “Preserving Your Code” on page 3-9
- “File Naming Conventions” on page 3-10

## Recommended Compilation Options for codegen

### **-c Generate Code Only**

Use the `-c` option to generate code only without invoking the `make` command. If this option is used, `codegen` does not generate compiled object code. This option saves you time during the development cycle when you want to iterate rapidly between modifying MATLAB code and generating C code and are mainly interested in inspecting the C code.

For more information and a complete list of compilation options, see `codegen`.

### **-report Generate Code Generation Report**

Use the `-report` option to generate a code generation report in HTML format at compile time to help you debug your MATLAB code and verify that it is suitable for code generation. If the `-report` option is not specified, `codegen` generates a report only if compilation errors or warnings occur.

The code generation report contains the following information:

- Summary of compilation results, including type of target and number of warnings or errors
- Build log that records compilation and linking activities
- Links to generated files
- Error and warning messages

For more information, see `codegen`.

## Testing MEX Functions in MATLAB

To prepare your MATLAB code before you generate C code, use `codegen` to convert your MATLAB code to a MEX function. `codegen` generates a platform-specific MEX-file, which you can execute within the MATLAB environment to test your algorithm.


For more information, see `codegen`.

## Comparing C Code and MATLAB Code Using Tiling in the MATLAB Editor

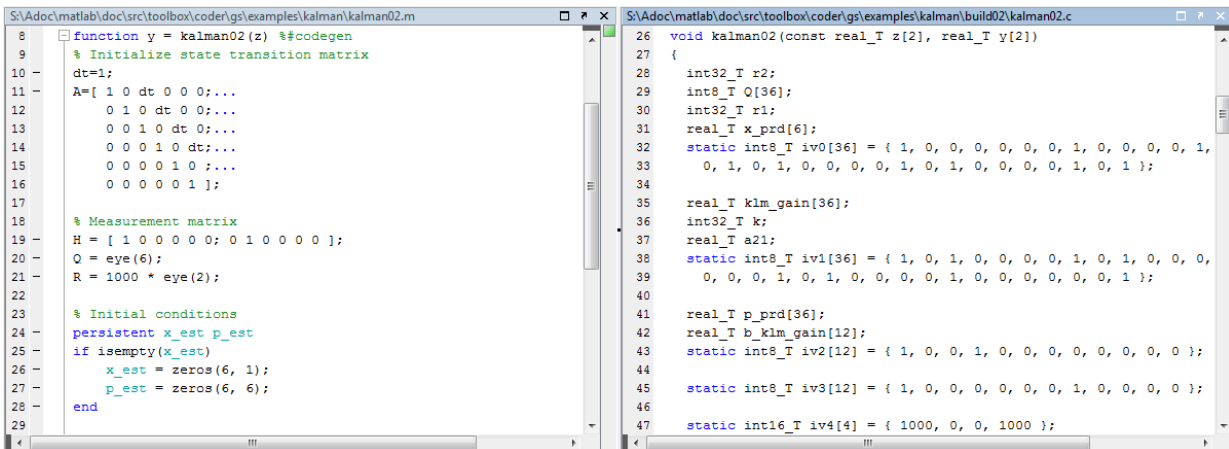
Use the MATLAB Editor's left/right tile feature to compare your generated C code to the original MATLAB code. You can easily compare the generated C code to your original MATLAB code. In the generated C code:

- Your function name is unchanged.
- Your comments are preserved in the same position.

To compare two files, follow these steps:

- 1 Open the C file and the MATLAB file in the Editor. (Dock both windows if they are not docked.)
- 2 Select **Window > Left/Right Tile** (or the  toolbar button) to view the files side by side.

The MATLAB file `kalman02.m` and its generated C code `kalman02.c` are displayed in the following figure.



```

8 function y = kalman02(z) %codegen
9 % Initialize state transition matrix
10 dt=1;
11 A=[ 1 0 dt 0 0 0;...
12     0 1 0 dt 0 0;...
13     0 0 1 0 dt 0;...
14     0 0 0 1 0 dt;...
15     0 0 0 0 1 0;...
16     0 0 0 0 0 1];
17
18 % Measurement matrix
19 H = [ 1 0 0 0 0 0; 0 1 0 0 0 0];
20 Q = eye(6);
21 R = 1000 * eye(2);
22
23 % Initial conditions
24 persistent x_est p_est
25 if isempty(x_est)
26     x_est = zeros(6, 1);
27     p_est = zeros(6, 6);
28 end
29
26 void kalman02(const real_T z[2], real_T y[2])
27 {
28     int32_T r2;
29     int8_T Q[36];
30     int32_T r1;
31     real_T x_prd[6];
32     static int8_T iv0[36] = { 1, 0, 0, 0, 0, 0, 0, 0, 1, 0, 0, 0, 0, 1,
33                             0, 1, 0, 1, 0, 0, 0, 0, 1, 0, 1, 0, 0, 0, 0, 1, 0, 1 };
34
35     real_T klm_gain[36];
36     int32_T k;
37     real_T a21;
38     static int8_T iv1[36] = { 1, 0, 1, 0, 0, 0, 0, 1, 0, 1, 0, 0, 0,
39                             0, 0, 0, 1, 0, 1, 0, 0, 0, 1, 0, 0, 0, 0, 0, 0, 1 };
40
41     real_T p_prd[36];
42     real_T b_klm_gain[12];
43     static int8_T iv2[12] = { 1, 0, 0, 1, 0, 0, 0, 0, 0, 0, 0, 0 };
44
45     static int8_T iv3[12] = { 1, 0, 0, 0, 0, 0, 0, 0, 1, 0, 0, 0 };
46
47     static int16_T iv4[4] = { 1000, 0, 0, 1000 };

```

## Using Build Scripts

If you use `codegen` to generate code from the command line, use build scripts to call `codegen` to generate MEX functions from your MATLAB function.

A build script automates a series of MATLAB commands that you want to perform repeatedly from the command line, saving you time and eliminating input errors. For instance, you can use a build script to clear your workspace before each build and to specify code generation options.

Here is an example of a build script to run `codegen` to process `lms_02.m`:

```
close all;
clear all;
clc;

N = 73113;

codegen -report lms_02.m ...
        -args { zeros(N,1) zeros(N,1) }
```

where:

- `close all` deletes figures whose handles are not hidden. See `close` in the MATLAB Graphics function reference for more information.
- `clear all` removes variables, functions, and MEX-files from memory, leaving the workspace empty. It also clears breakpoints.

---

**Note** Remove the `clear all` command from the build scripts if you want to preserve breakpoints for debugging.

---

- `clc` clears all input and output from the Command Window display, giving you a “clean screen.”
- `N = 73113` sets the value of the variable `N`, which represents the number of samples in each of the two input parameters for the function `lms_02`
- `codegen -report lms_02.m -args { zeros(N,1) zeros(N,1) }` calls `codegen` to generate C code for file `lms_02.m` using the following options:
  - `-report` generates a code generation report

- `-args { zeros(N,1) zeros(N,1) }` specifies the properties of the function inputs as a cell array of example values. In this case, the input parameters are N-by-1 vectors of real doubles.



## Check Code Using the MATLAB Code Analyzer

The code analyzer checks your code for problems and recommends modifications. You can use the code analyzer to check your code interactively in the MATLAB Editor while you work.

To verify that continuous code checking is enabled:

- 1 In MATLAB, select the **Home** tab and then click **Preferences**.
- 2 In the **Preferences** dialog box, select **Code Analyzer**.
- 3 In the **Code Analyzer Preferences** pane, verify that **Enable integrated warning and error messages** is selected.

## **Separating Your Test Bench from Your Function Code**

If you use `codegen` to generate code from the command line, separate your core algorithm from your test bench. Create a separate test script to do the pre- and post-processing such as loading inputs, setting up input values, calling the function under test, and outputting test results.

## Preserving Your Code

Preserve your code before making further modifications. This practice provides a fallback in case of error and a baseline for testing and validation. Use a consistent file naming convention. For example, add a 2-digit suffix to the file name for each file in a sequence. See “File Naming Conventions” on page 3-10 for more details.

# File Naming Conventions

Use a consistent file naming convention to identify different types and versions of your MATLAB files. This approach keeps your files organized and minimizes the risk of overwriting existing files or creating two files with the same name in different folders.

For example, the file naming convention in the Generating MEX Functions getting started tutorial is:

- The suffix `_build` identifies a build script.
- The suffix `_test` identifies a test script.
- A numerical suffix, for example, `_01` identifies the version of a file. These numbers are typically two-digit sequential integers, beginning with 01, 02, 03, and so on.

For example:

- The file `build_01.m` is the first version of the build script for this tutorial.
- The file `test_03.m` is the third version of the test script for this tutorial.